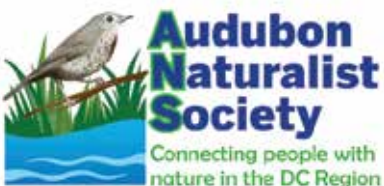


AUDUBON NATURALIST SOCIETY

# Naturalist Quarterly

Spring 2020

ANSHOME.ORG



Celebrating Earth Day Every Day

ANS NATURE ACTIVITIES & NEWS

The Audubon Naturalist Society inspires residents of the greater Washington, DC region to appreciate, understand, and protect their natural environment through outdoor experiences, education, and advocacy.

#### HEADQUARTERS

Woodend, a 40-acre wildlife sanctuary in Chevy Chase, MD

#### OFFICE HOURS

Monday-Friday 9 AM-5 PM

#### STORE HOURS

Monday-Friday 10 AM-5 PM

Saturday 9 AM-5 PM

Sunday 12-5 PM

#### GROUNDS HOURS

Dawn to dusk

#### ANS MEMBERSHIP

Student \$15

Individual \$50

Family \$65

Nature Steward \$100

Audubon Advocate \$200

Sanctuary Guardian \$500

Naturalists Council \$1,000

Preservationist \$1,000+

NATURALIST QUARTERLY is published four times a year by the Audubon Naturalist Society, 8940 Jones Mill Road, Chevy Chase, MD 20815. Photos, art work, and articles may not be reprinted without permission from the editor. Opinions offered do not necessarily reflect official ANS policy. Advertised products or services do not carry the endorsement of ANS.

ISSN 0888-6555

#### MANAGING EDITOR

Caroline Brewer

#### SENIOR EDITOR

Pam Oves

© 2020 Audubon Naturalist Society

#### CONTACT INFORMATION

ANS Headquarters/Woodend

Sanctuary

301-652-9188

FAX 301-951-7179

ANShome.org

contact@anshome.org

Audubon Naturalist Shop

301-652-3606

Conservation, MD x22

Conservation, VA 571-278-5535

Environmental Education x16

Membership x35

Publications, advertising x23

Rentals x38

Volunteers x20

Contributions x31

Special Events x12

Rust Sanctuary 703-669-0000

#### OFFICERS

PRESIDENT Nancy Pielemeier ('22)

VICE PRESIDENT Beth Ziebarth ('20)

TREASURER Alice Ewen ('21)

SECRETARY Becky Turner ('21)

#### BOARD OF DIRECTORS

Susan Blaha ('21), James Burris ('22), Scott

Fosler ('20), Patricia Hernandez ('21), Ryan

Matney ('20), Hughey Newsome ('22), Abel

Olivo ('22), Carolyn Peirce ('22), Gregg

Petersen ('21), Rob Timmons ('20),

Nancy Voit ('21), Larry Wiseman ('22),

Diane Wood ('22)

#### EXECUTIVE DIRECTOR

Lisa Alexander

#### CONSERVATION

Eliza Cava, Director of Conservation; Gregg

Trilling, Creek Critters Program Manager;

Cathy Wiss, Water Quality Monitoring

Program Coordinator; Ari Eisenstadt, DC

Conservation Advocate; Denisse Guitarra,

MD Conservation Advocate; Renee Grebe,

VA Conservation Advocate

#### DEVELOPMENT

Jacky Wershbale, Director of Development;

Debra Prybyla & Lin Orrin, Grant Writers;

Loree Trilling, Database Coordinator; Kristin

Cook, Database & Email Assistant; Larry

Petrovich, Assistant

#### ENVIRONMENTAL EDUCATION

Diane Lill, Director; Stephanie Mason, Senior

Naturalist; Stephanie Bozzo, Preschool

Director, Amelia McLaughlin, Chelsea Hawk,

Shannon Earle, Julie Walkup, Ruth Polk, Kate

Bueno, Belinda Saffell, Preschool Teachers;

Nora Kelly, Camp Director; Serenella Linares,

School Programs Manager; Lauren Simpson,

Lee Anne Graeb, Debbie Borkowski,

GreenKids Specialists; Jenny Brown,

Garden Programs Manager; Gina Ghertner,

Mikel Moore, Denis Perez, Steven Pearce,

Environmental Educators

#### FINANCE

Lois Taylor, Comptroller; Sherrice Ajebon,

Senior Accountant/Benefits Manager;

Alesha Mack, Staff Accountant

#### MARKETING & COMMUNICATIONS

Caroline Brewer, Director of Marketing

and Communications; Vince Robinson,

Webmaster and Social Media Manager; Ben

Israel, Videographer/Photographer

#### NATURALIST SHOP

Matt Mathias, Manager; Rebecca Henson,

Naturalist Shop Specialist

#### OFFICE MANAGEMENT

Pam Oves, Office Manager; Carol Hayes,

Office Coordinator

#### OPERATIONS

Amy Ritsko-Warren, Director of Operations

#### PROPERTY MANAGEMENT

Bjorn Busk, Property Manager; Ami

Smerling, Assistant Property Manager

#### RENTALS

Beatriz Engel, Manager

#### RUST SANCTUARY

Susanne Ortmann, NOVA Programs

Manager; Ellen McDougall, Environmental

Educator

#### VOLUNTEERS

Mitch Greene; Volunteer Coordinator

#### WOODEND RESTORATION

Alison Pearce, Director of Restoration;

Bradley Simpson, Fellow

# Naturalist Quarterly

ANShome.org Spring 2020

|                                   |    |
|-----------------------------------|----|
| From the Director                 | 3  |
| Reflections on Earth Day at 50    | 4  |
| Garden Stories Worth Telling      | 5  |
| Environmental Champions           | 6  |
| Conservation                      | 8  |
| Adults and Children Nature Photos | 10 |
| Children and Family Programs      | 12 |
| Adult Nature Programs             | 16 |
| CALENDAR                          | 20 |
| Feature Photos                    | 26 |
| Stream Science Classes            | 28 |
| Free Birding Trips                | 29 |
| Natural History Field Studies     | 30 |
| Nature Travel                     | 32 |
| Volunteer Corner                  | 33 |
| ANS News                          | 34 |
| Restoration                       | 36 |
| Tributes                          | 37 |
| Registration Info                 | 39 |

**COVER** Photo of American Goldfinch by Jane Gamble.

## From the Director

### Feel the Power

When we rang in 2020, I had no idea that the New Year would come in like a lion. From the very first of the year, the environment has been under siege. Assaults on nature took many forms. Maryland and Virginia moved ahead with major highway and bridge plans without waiting for critical Environmental Impact Studies to be completed. The federal government threw multiple punches that weakened environmental safeguards – everything from removing marshland and ephemeral streams from protection under Waters of the United States, to the EPA stepping back from enforcement of Chesapeake Bay restoration goals, to weakening of the Migratory Bird Treaty Act, the very legislation Audubon Naturalist Society was formed to create!

But in this year that we celebrate the 50th anniversary of Earth Day, we must take heart and use our collective power to protect the planet. Everywhere I look, I see signs of people coming together to do just that. More than 250 people gathered at our third Taking Nature Black Conference to make a significant and positive impact on climate change and environmental justice in our region. You could feel the positive energy and action swelling throughout the conference. I'm especially awed by the Environmental Champions, six African American leaders (and Wangari Mathaai, our Legacy Champion) who are walking the talk every day and bringing thousands of people along with them, sometimes from other parts of the globe. Please treat yourself to reading the good news about their work (page 6).

We started 2020 strong with a newly convened Climate and Conservation Task Force. Powerful, local environmental leaders have stepped up to help ANS evolve our advocacy program in the



face of climate crisis. Look for an exciting report on the outcomes of that Task Force soon. And we have brought together an amazing team of plant restoration, historic preservation, nature interpretation, environmental justice and education specialists to create the Woodend 2065 Committee. The 2065 Committee is the most diverse committee ANS has ever fielded, and it will provide strategic guidance on the transformation of Woodend Sanctuary into an inclusive beacon of environmental learning, stewardship and action through Nature for All.

As we build up to Earth Day, the number of ANS outreach activities is astonishing. Here's a taste of just a few!

- Our Conservation team will lobby Congress on Capitol Hill for full funding for environmental protections.
- Our Nature Preschoolers will lead a Planet Pal parade with costumes made from recycled materials.
- Our Garden Manager will help students at the German International School plant a pollinator garden.
- Our Volunteer Coordinator will help teams plant native trees and plants at our Woodend and Rust Nature Sanctuaries.
- Our Northern Virginia advocate will work with residents of a mobile home community in Alexandria to clean up their local stream.
- Our Youth Education Team will reach thousands of people at the Montgomery County Green Fest and the National Institutes of Health Earth Day celebrations.
- High school trainees in our *Testing the Waters* program will teach elementary schoolers how to conduct a stream study.
- Our GreenKids, School Field Trip and Chemistry Matters programs will take hundreds of students from pre-K through high school outside for learning in April.
- Our Naturalist Shop will provide free compost bins to support our neighbors at the North Chevy Chase Earth Day event.
- And Vernice Miller-Travis will speak at our April Conservation Café (page 9). If you've never had the chance, sign up now to hear this hero of environmental justice tell her amazing story. All this Earth month activity shows how ANS is taking broad and systemic action for the good of the environment. It takes my breath away and gives me hope!

To me that hope is based on **gathering power** in 2020. ANS will dig deep and play a crucial role in uniting people for more than just discussion, more than wringing of hands over the state of environmental protection today. We will gather people and power to take action at the local, state and federal level to combat climate change, to stop the dismantling of environmental protections, to insist that our state and local governments make sound transit, housing and land use decisions that protect our rare natural habitats and provide a sustainable future for younger generations. Commit your time, talent and treasure for ANS calls to action – vote, rally, write in, plant trees, ride bikes, collect data, bring a friend, stand up on this 50th anniversary of Earth Day and take action to protect our one, our only, our precious planet.



ANS Senior Naturalist Stephanie Mason's original Earth Day pins. For more on Stephanie's recollections of the first Earth Day, see page 4. Photo by Ben Israel.

A handwritten signature in black ink, appearing to read 'Stephanie'.



# Reflections on Earth Day at 50

by Sarah Fraidin

Flames shooting five stories high on the surface of Cleveland's Cuyahoga River were extinguished in less than an hour. But the images, the images of a river ablaze seen across the United States were so powerful that they sparked environmental activism that still burns today.

Images of that heavily polluted river fire in 1969 led Audubon Naturalist Society Senior Naturalist Stephanie Mason to devote her life to the cause.

"I was a college freshman. Up until then I was more concerned about the Vietnam War than the environment," Mason said.

Mason, who has led nature walks, the travel program, and adult education classes for ANS over the past 30 years, remembers attending the precursor to the first Earth Day event, a teach-in at the University of Michigan in March, 1970.



Photo by Ben Israel

*ANS Senior Naturalist Stephanie Mason*

"Ralph Nader was the headline speaker and we thought he was a very big deal. I don't remember anything that was said that day, only that we were sitting on the balcony level of a huge lecture hall," Mason recalls. "The Cuyahoga River (fire) got lots of press. So there was awareness on the part of many students that the environment was in trouble."

The success of that teach-in, Mason said, confirmed to organizers the need for a nationwide celebration, which they quickly christened Earth Day. Today the Cuyahoga River is cleaner than it has been in more than a century and Earth Day, which turns 50 April 22, has become an international event during which billions of people across 193 countries demonstrate support for environmental protection.

Not only has awareness about the need for environmental protection continued to grow, but also the diverse group of people working together to make improvements.

On the first Earth Day, Executive Vice President for Environment and Sustainability at Metropolitan Group and Co-founder of WeAct, Vernice Miller-Travis was 11 years old, living one mile from Central Park.

Miller-Travis is now a civil rights icon in her own right. She's a 2018 ANS Taking Nature Black Conference Environmental Champion, and according to Metropolitan Group, "one of the nation's leading experts, pioneers and most respected thought leaders on environmental justice and a leader with significant expertise in clean air, land and water regulatory systems, and environmental and urban planning."

She recalls, "Not one thing was said to anyone in Harlem about this big celebration."

Twenty years later, through, found Miller-Travis one of three people of color who were asked to speak to the hundreds of thousands who gathered for Earth Day, 1990, in that very same Central Park. Alongside Miller-Travis that day was Cesar Chavez. As the leader of the United Farm Workers, his activism was credited with the elimination of DDT, an insecticide that was found dangerous to plant, animal, and human life.



*Vernice Miller, Cesar Chavez, Peggy Shepard, Earth Day 1990*

"A lot had changed, and at least there was an acknowledgement that there is this whole other dimension to environmental activism in the United States."

Indeed, in a 2016 Earthjustice.com article, the veteran environmental leader said over the years, "I found that people can learn any subject matter that they need to when their lives are in danger. I also learned that if you really want to get to the bottom of environmental injustice, then you have to understand the relationship between race, land use and zoning."

Pita Juarez, Communications Director of the environmental justice organization Chispa, says the participation of African Americans and Latinos in Earth Day programs is so important because their communities are disproportionately affected by climate change. "Latino people have always been environmentalists but now I feel really proud we have a voice on the issues," she said. Among other issues, she's excited about the progress they've made with a wide range of constituent groups. "We have created policy working with youths and undocumented moms fighting for electric buses, clean air, clean water, and clean parks."

Juarez credits Earth Day for keeping Americans focused on demonstrating greater respect for the planet, which seems to be the best way to honor this important anniversary.

# Garden Stories Worth Telling

by Alison Pearce

Are you overwhelmed by media stories about extinction and climate change? This Earth month, we want to encourage you to take positive environmental action while doing something that joyfully connects you with nature ... gardening! In our age of environmental anxiety, gardens can be places of respite for us, as well as powerful agents of environmental healing with plant communities that feed and shelter wildlife, and green engineering that prevents erosion, flooding and pollution.

Gardens also can be the settings of inspiring stories of community, resilience and interdependence.

You don't need to be an expert to create a positive garden story. Don't let jargon like *ecotype* or *nativar* intimidate you. Don't fret about eradicating every non-native plant from your landscape. Just take the first step, or two, and enjoy the fascinating plot that unfolds.

We can help you get started. On April 29th, four accomplished landscape designers will share stories about gardens they have designed, including their favorite native plants, and lessons learned through success and failure along the way.

- **Maisie Hughes**, owner of Design Virtue, explores how inclusive placemaking with people and plants can create greener and more equitable cities.
- **Edamarie Mattei**, owner of Backyard Bounty, has created hundreds of sustainable gardens in the DC area that provide wildlife and pollinator habitat, and prevent stormwater from running into our creeks, rivers and Bay.
- **Claudio Vasquez**, co-owner of Izel Native Plants, uses his home garden for "growing trials" to discover self-sustaining, resilient plant combinations to promote to other gardeners.
- **John Snitzer**, owner of Snitzer Landscaping, designs gardens for Woodend and the Nature Conservancy headquarters in Arlington, using natural processes and cycles to conserve the everyday places where we live.

We hope you'll join us for this special event at Woodend and be inspired to write the next chapter in your own heavenly *here-on-Earth* garden story.



*Pollinator Garden, Silver Spring.*

*Photo credits: Backyard Bounty, by Regis Lefebure.*

## Garden Stories

**Wednesday, April 29 (1-4 pm)**  
**Native Plant Sale from 12-5 pm**  
**Members \$40; nonmembers \$55**  
**Woodend Sanctuary**

This Earth month, we want to encourage you to take positive environmental action while doing something that joyfully connects you with nature...*gardening!* Four accomplished landscape designers will share stories about particular gardens they have designed, including their favorite native plants, and lessons learned through success and failure along the way.

Register at [www.anshome.org/gardenstories](http://www.anshome.org/gardenstories).

# Taking Nature Black Conference: Environmental Champions Salute Earth Day Every Day!

by Sarah Fraidin

*The Audubon Naturalist Society was proud to honor seven African American Environmental Champions at its 2020 Taking Nature Black Conference on February 27. We present them to you here, along with their views about the environment in the context of the 50<sup>th</sup> Anniversary of Earth Day.*



**National Environmental Champion Fred Tutman's** road to clean water advocate has twisted and turned like the waters he fights to protect. Tutman's work at the Patuxent Riverkeeper is known and revered internationally. Tutman says his biggest contribution has been creating an overall system of better, stronger laws to protect clean water. Over 16

years, Patuxent Riverkeeper has litigated 19 cases, winning nearly a half-billion dollars in judicial penalties, fines and reparations from polluters. And to leave an enduring legacy of loving Mother Earth every day. "I am flattered to get feedback occasionally from younger advocates of color that my example helped them chart their own courses as well," he said. "I think my presence has, at least for some, helped normalize the idea that black people are not only environmentalists, but that we are also leaders, innovators and champions in our own right."

**Mustafa Santiago Ali**, Vice President of Environmental Justice, Climate, and Community Revitalization with the National Wildlife Federation and founder of the EPA's Environmental Justice Department, is also a **National Environmental Champion**.

Ali spent most of his youth growing up in West Virginia, near a coal-fired plant and a spring that was contaminated with heavy metals, and later relocated to Detroit. He grew up in an activist family and sees the 50<sup>th</sup> anniversary of Earth Day as an opportunity "to live up to Dr. King's vision. Dr. King reminded us that we came to these shores on different ships, but we're all in the same boat now," said Ali. "I'm hoping that when we get to the 75<sup>th</sup> anniversary that we look back and say we were able to come together as a people, as a country, and do the right things...Failure cannot be a part of our paradigm moving forward. Separation cannot be a part of our paradigm moving forward. Inclusivity has to lead the way."



**Regional Environmental Champion Akiima Price** has been an environmental educator for 27 years, beginning as a park ranger, because "it spoke to my heart," she said. Price, who is working on special projects in DC's Wards 7 and 8 with the National Park Service, has been saluted for her good works on social

media by DC Actress Regina Hall and by others around the country. In partnership with Cornell University's EECapacity Project, Price is using nature to help people heal. She's developing innovative park-based programs to connect members of low-income communities to outdoor spaces. For example, she hosts therapy sessions for mental health patients in the park. Price moves mountains to help people incorporate outdoor time into their daily routines because of its essential value to everyday living. "We do a disservice treating (Earth Day) as a one-time thing, instead of a year-round value," she said.

**Regional Environmental Champion Michael Carter, Jr.** is an

11<sup>th</sup> generation farmer in Virginia. He also trains students, educators and professionals in African cultural understandings. Carter is most proud of his work, which he sees as a way to celebrate Earth Day unceasingly, because of the young Africans and African Americans whose attitudes he has seen change after working the land with him. For instance, in 2011, he toiled beside the Adams Morgan Youth Leadership Academy to build a community garden. Sadly, a developer destroyed it with construction equipment. For Carter, the garden was still a success. "The anger, despair and distraught look on the faces of the children let me know how much this project was starting to mean to them. Even though the project was uprooted, those seeds of earth stewardship and compassion were planted and watered (for good)."





# TAKING NATURE BLACK



Taking Nature Black 2020 is honoring **Tiaa Rutherford** as a **Regional Environmental Champion**. Rutherford's official title is Litter Reduction Program Manager for the Sustainable Initiative Division of the Prince George's County Department of the Environment. But in effect, she stands in the gap for every resident in the region

who needs clean water. Rutherford works to improve maintenance practices and infrastructure to intercept litter before it reaches the Anacostia River. For the 50<sup>th</sup> annual Earth Day, Rutherford will enjoy seeing Prince George's County residents mulching, planting flowers, picking up trash, and picnicking in Watkins Park, as part of the county's *Going Green* celebration. But she says it's bittersweet. "I'm amazed at the state of affairs this county is in politically and the regression of (federal) laws that were set in place to protect the environment. I am, however, optimistic that the youth among us are aware and ready to take up the helm and lead the charge (to) overcome this sad state of affairs."

Taking Nature Black **Youth Environmental Champion Jerome Foster II** seems to blaze trails in his sleep. He founded the international online publication *The Climate Reporter*, with reporters from eight countries, as a 16-year-old, and OneMillionOfUS, a grassroots youth voter mobilization organization, as a 17-year-old. With both organs,



Foster II, hopes to inspire more politicians to listen to Mother Earth's pleas for support year-round. The senior at Washington Leadership Academy Public Charter School, who has been accepted at Harvard and MIT, is being heard. Foster and his coalitions successfully lobbied DC Councilmembers for 17 hours straight to pass the most ambitious

clean energy act in the United States. "It was amazing! It showed that our elected officials really do care about young people." Next, Foster wants to see the Climate Change Education Act passed to mandate climate topics be included in science curricula starting in kindergarten. "It would revolutionize the way kids grow up in America and help hold our leaders accountable."



Foster is following in the footsteps of many an environmental giant, including 2020 Taking Nature Black **Legacy Environmental Champion Wangari Maathai**. Maathai, the Kenyan environmental and political activist who became the first African woman to win the Nobel Prize, also had a gift for getting people to listen. In

the face of fierce government opposition, she launched the Greenbelt Movement in 1977 and inspired thousands of Kenyan women to plant millions of trees that tackled decades of devastating soil erosion and pollution. Brenda Randolph, Outreach Director of the Howard University Center for African Studies, is one of many in the D.C. area

and internationally who continue to keep the flames of Maathai's legacy alive. "We constantly hear stories about how her work with the Greenbelt Movement inspires people to plant trees to curb global warming - including a story about a young man in the *Washington Post* a couple of weeks ago!" said Randolph. She and her colleague, Vanessa Oyugi, keep Maathai's legacy alive in numerous ways,



including promoting children's books on Maathai and other issues of environmental concern, along with a key lesson they developed for schoolchildren. More information about their work and connection to Maathai is available at [www.africaaccess.org](http://www.africaaccess.org).

More information about the 2020 TNB Environmental Champions can be found at our website, [www.anshome.org/taking-nature-black](http://www.anshome.org/taking-nature-black).

# Conservation



## Policy and Advocacy News

### Regional

**Action Alert: Save the Birds!** ANS was founded in 1897 in part to help pass one of the nation's first environmental laws, the Migratory Bird Treaty Act. Over time the MBTA has been a critical tool to encourage people and businesses to avoid and minimize harm to birds, and to create alternative habitats when harm couldn't be avoided. It has also had criminal penalties for scofflaws. But now, the Trump administration is rolling back many elements of enforcement under the MBTA. Representatives in Congress have put forward a new bill, the Migratory Bird Protection Act, that will again protect birds as they should be under the MBTA. *Visit the Conservation Blog to send a letter today to your Senators and Representatives asking them to support the Migratory Bird Protection Act!*



Photo by Ben Israel

### Maryland

**Action Alert: ANS advocates for environmental protection on Beltway, transit, and more.** ANS testified during the January Board of Public Works hearing against the Beltway/ I-270 expansion and continued to advocate for the release of the environmental impact statements (EISs) before the state moves forward on contracting. During the 2020 Maryland General Assembly, ANS is supporting transit investment, oyster protection, and plastic bag and Chlorpyrifos ban bills. *Please go to the Conservation Blog to learn how you can support this year's environmental and transit bills.*

**Action Alert: Thrive 2050/Prospera 2050** is Montgomery Planning Department's campaign to revise and develop the county's General Master Plan. The Plan will guide policy makers and planners on transportation, housing, parkland, and economic growth decision in the county for the next 30 years. Public commenting periods will open soon. **Join Montgomery County Director of Planning at Woodend on June 11 to learn more about the Plan update and contribute your comments!** *Sign up for our Action Alerts or visit the Conservation Blog to learn more.*

### Washington, DC

**ANS submits comments on the DC Comprehensive Plan Revision:** Last revised in 2006, the "Comp Plan" will guide decisions on development and land use in the District of Columbia for the next 20 years. This will be a critical period for implementing DC's ambitious climate change and equity goals, that ANS strongly supports. ANS took the opportunity to comment on this momentous final set of revisions, with a focus on environmental protection, land use, housing, and transportation. *Please read our full comment letter on the Conservation Blog.*



**ANS hears from youth on climate change:** In January, ANS hosted a Conservation Café in Columbia Heights, D.C. We heard from 4 young panelists (above) making waves in the local and global response to the climate crisis. Panelists included Jerome Foster II, founder of OneMillionofUs, Valarie Proctor, a Piscataway climate activist, Hannah Perry, an organizer from Sunrise Movement, and Nathan Hopkins, a volunteer from Extinction Rebellion D.C. This was one of our most well-attended Conservation Cafés and brought audience members from all over the region. *Check out a livestream of the panel on the Conservation Blog!*



# Conservation



## Virginia

**Virginia Conservation Network Lobby Day:** This is an exciting year in Virginia as the General Assembly evaluates more positive environmental legislation than we've seen in years. ANS' Renee Grebe joined the Virginia Conservation Network Lobby Day in Richmond this January to meet with local Senators and Delegates from Northern Virginia. ANS is supporting a myriad of bills including (1) allowing the state of Virginia to join several other states in the Regional Greenhouse Gas Initiative (RGGI), (2) the Solar Freedom Bill which would allow more distributed solar installations to reduce our greenhouse gas emissions, and (3) a host of environmental justice bills which seek to ensure no one bears a disproportionate share of negative environmental consequences resulting from environmental decisions. By July, Virginia should see some exciting enacted legislation! *Follow along and check out opportunities to Take Action on the Conservation Blog.*



Photo by Renee Grebe

## Workshops & Events

Learn more and register at [anshome.org/conservation-events](http://anshome.org/conservation-events).

### Friday, March 6: Sustainable Solutions to Landscaping Headaches.

A workshop for HOAs and Condo Associations. NOVA Community College Annandale Campus. 9:30 am–1 pm. FREE

**Wednesday, March 11: Conservation Advocacy 101.** Learn how to speak out so your voice is heard! Instructors use scenarios, role-play, storytelling, and group and expert feedback to build confidence in new skills. Woodend Nature Sanctuary. 10 am–2 pm. \$20 members/\$30 nonmembers.

### Saturday, March 21: Walk & Talk: Where Does the Water Go?

When it rains along Richmond Highway, where does the water go? Join Fairfax County staff to walk and talk about ideas for making Little Hunting Creek part of the community again. Meet up near Mama's Kitchen on Fordson Rd, Alexandria. 9–10 am. FREE

### Saturday, April 18: Potomac River Watershed Cleanup Day!

Celebrate **Earth Month** with neighbors, members, and friends at Audubon Estates, a community along Little Hunting Creek in Alexandria, VA. 9 am–12 pm. Please lend a hand to clean the creek!

**Thursday, May 14: Watershed Community Action 101.** Join ANS experts for a fun and empowering workshop for an introduction to community action & watershed stewardship! No matter the issue, you'll learn about how you can drive change and make a difference. You'll build an action plan and role-play in scenarios to gain confidence in speaking up for nature. Northern Virginia Community College Annandale Campus. 10 am–2:30 pm. \$15 members/\$20 nonmembers.

### Thursday, June 11: Get Involved with Thrive Montgomery 2050.

Join Montgomery County Planning Director Gwen Wright and planning staff to learn about the General Plan Update process, see the revised Goals and Policies, and submit your comments. Get involved in the long-term vision for land use, the environment, transportation, equity, and more! Woodend Nature Sanctuary. 6:30–8:30 pm. FREE

## Conservation Cafés

Join us for coffee and dessert while enjoying inspiring presentations on nature conservation topics. Your \$15 registration fee supports our Conservation Program! **See detailed descriptions and register at [anshome.org/conservation-cafe](http://anshome.org/conservation-cafe).**

• **Thursday, March 26: Meet new NOVA Eco-Advocates and Tell Them What They Can Do for You.** Environmental and smart-growth organizations are staffing up across Northern Virginia and we want to hear from you. You'll also get to hear about this year's priorities and how organizations work together. FREE; in NOVA @ Providence District Community Center, 7-8:30 pm.

• **Wednesday, April 15: Vernice Miller-Travis, national leader on Environmental Justice.** It's time to place the quest for Environmental Justice at the forefront of our **Earth Day** celebrations! (see p. 4 for a preview of Vernice's talk!) Woodend Nature Sanctuary, 7-8:30 pm.

• **Thursday, May 7: Felipe Benitez, Executive Director of Corazón Latino.** Trees, Science, and People: How Corazón Latino engages communities in conservation topics. Woodend Nature Sanctuary, 7-8:30 pm.



Interested in getting involved or learning more?  
Sign up for our Action Alert list and check out our Blog at [conservationblog.anshome.org/tag/2020SpringNQ](http://conservationblog.anshome.org/tag/2020SpringNQ).





Photo by Ben Israel

A student looks at wildflowers in the meadow during the Master Naturalist class on herbaceous plants.



Photo by Mitch Greene

A student inspects a variety of insects in the Master Naturalist class on insects.





Photo by Denis Perez

A kindergartner from Van Ness Elementary School in DC takes part in an ANS Discovery Hunt trip to Kenilworth Aquatic Gardens. The trip was funded by the Stone and Holt Weeks Foundation, part of our Walk in the Woods program. During that visit, ANS Environmental Educators helped the children get close looks at nature all around, enjoy dispersing cattail seeds, and observe aquatic life on the ponds.



# Early Childhood Programs

You and your kids can unplug and explore nature every day at Woodend and Rust Nature Sanctuaries, open dawn to dusk, for free, 365 days a year. Our trained naturalists and excellent volunteers are eager to introduce children to nature through the Audubon Nature Preschool, Summer Camp, Nature Birthday Parties, Family Programs, and at your child's school through School Programs and GreenKids. Consider having your PTA or PTO sponsor a nature activity for your school!

## Audubon Nature Preschool

The Audubon Nature Preschool features programs for children ages 6 years and younger. Children benefit from exploring the natural surroundings of the 40-acre sanctuary, which offer endless opportunities for investigation and discovery.

The Audubon Nature Preschool builds on children's inherent curiosity about the world by using hands-on, nature-based activities to foster social, physical, and academic skill development.

All Nature Preschool programs run September-May. Visit [anshome.org/ans-preschool](http://anshome.org/ans-preschool) for more info or call Preschool Director Stephanie Bozzo at 301-652-9188 x32.



## Tales and Trails

**Ages 2-4 with a caregiver**  
**Tuesdays, March 31-June 9 (No class April 7)**  
**(10-10:45 am)**  
**Spring Session: \$80 per child**  
**Register at [anshome.org/tales-trails](http://anshome.org/tales-trails)**

This 10-week class invites young children to discover the wonders of nature as we journey through the changing seasons. We'll tap into children's deep connection with nature by reading stories, making fun crafts, and singing songs. Make sure to dress for the weather as we will explore our sanctuary trails each class to see what new surprises we can find.



Feel free to relax and enjoy our trails, picnic areas, and bookstore before or after the program. Register online at [www.anshome.org/parents](http://www.anshome.org/parents). Questions? Contact Gina at [gina.ghertner@anshome.org](mailto:gina.ghertner@anshome.org).

## Fresh Air Kids at Rust Sanctuary!

Children are born naturalists. The Audubon Naturalist Society builds on children's inherent curiosity about the world by using hands-on, nature-based activities to foster social, physical, and academic skill development. Our Fresh Air Kids Class is for children ages 5 and younger, along with a parent or caregiver. Classes might involve crafts, songs, books and always a hike. Bring your lunch or snack. Mingle and meet other caregivers!

**Rust Sanctuary, Leesburg ,VA**  
**Fridays (10-11:30 am)**  
**Spring Session: April 3-June 5**  
**(no class April 10 or May 29)**  
**Cost: \$125 (siblings 21 months and older \$115, siblings under 21 months free)**  
**Register at [anshome.org/parents](http://anshome.org/parents)**

Reservations not confirmed until payment received (checks only). Please mail checks made payable to ANS and send to ANS, Attn: Pam Oves, 8940 Jones Mill Rd, Chevy Chase, MD 20815.



*Capon Bridge, WV | 58th Season*

*Hike. Swim. Explore the Appalachian wilderness.*

*Small groups. Independent projects.*

*Music. Art. Games. And lots of laughter!*



|  |  |
|--|--|
| <b>SENIOR PROGRAM</b><br>(Ages 11-15)<br>Two week sessions  <br>June, July, August | <b>JUNIOR PROGRAM</b><br>(Ages 8-10)<br>One week session  <br>August |
|--|--|

**ADULT WEEKEND (Ages 21+)**  
 Friday, July 24-Sunday, July 26  
 Roam the ridges, taste wild edibles, learn bird songs, leaf print your t-shirt, and sketch by the stream. Knowledgeable staff, delicious food and beautiful surroundings!

For more information: [burgundycenter.org](http://burgundycenter.org)  
 703.842.0470 | [michelem@burgundyfarm.org](mailto:michelem@burgundyfarm.org)

# Camp Audubon

## Summer Camp Open House

**Saturday, June 6 (10 am-12 pm)**

Please RSVP to [nora.kelly@anshome.org](mailto:nora.kelly@anshome.org)

New to Camp Audubon or just feeling anxious about the summer? Then come to our free open house and learn about what makes Camp Audubon so special! The open house is geared to new Pre-K/K families but all are welcome.

- 10-10:15 am: Meet June Bug, the Camp Director
- 10:15-10:45 am: FAQs and tour of Teale and mansion
- 10:45-11:30 am: Check-in and pick-up procedures
- 11:30 am-12 pm: Questions/Concerns

## Learning Garden Open House

**Saturday, June 6 (10 am-12 pm)**

**FREE! No RSVP necessary.**

Come see where campers, students and pre-schoolers explore plants, harvest fruit, vegetables and herbs, and discover the wildlife that comes to the garden. See a pizza garden, a pickle garden, a three sisters garden and our composting area. Gardening experts from the Montgomery County Master Gardeners Program will be on hand to answer your questions and give tours of the garden.

Donations welcome. The Learning Garden is located near the side parking lot of the mansion. Questions? Email [jenny.brown@anshome.org](mailto:jenny.brown@anshome.org).



## Spring Break Camp (Grades K-9)

Register online at [www.anshome.org/parents](http://www.anshome.org/parents)

Experience the wonders of Spring at Camp Audubon! Catch frogs in the pond, hike to Rock Creek, and get your hands dirty in our Learning Garden! Grades 6-9 can earn up to 20 SSL hours doing sanctuary stewardship activities.

**Monday, April 6-Friday, April 10 (8:45 am-3 pm)**

**Extended camp available from 3-5 pm (\$75)**

**Members \$365; nonmembers \$450**

## MCPs School's Out Camps (Grades K-9)

Register online at [www.anshome.org/parents](http://www.anshome.org/parents)

Do you want your children to be outside in nature learning and having fun on their day off from school? Then send them to our School's Out Camp! We'll explore the Woodend Nature Sanctuary, get muddy in the pond, build forts, and play games.

**Tuesday, April 28 (8:45 am-5 pm)**  
**Members \$100; nonmembers \$115**

## Weekend Walks in the Woods

Join us the first Saturday of every month for a **FREE** naturalist-led walk in the woods. Explore the Woodend grounds and learn about different topics each month, such as birds, trees, insects, and fungi. All ages welcome! Walks run from 9-10 am. Meet at the gazebo by the Audubon Naturalist Shop.

## Summer Camp Spots Still Available!

Summer is almost here!! If you are looking for camps that will engage your child in nature, then we can help. We still have space in many camps.

Register online for all camps at [www.anshome.org/summer-camps](http://www.anshome.org/summer-camps). Camps with openings are listed under the red button "Click Here to See Camps That Still Have Space" on the top of the camp page. Questions about registration? Call Pam at 301-652-9188 x16 or email [pam.oves@anshome.org](mailto:pam.oves@anshome.org).

The deadline to cancel a camp and still be eligible for a full refund minus \$30 is Friday, April 17, 2020.

Confirmation packets will be emailed three weeks before your child's camp begins.



# School Programs in DC, MD & VA

## School Programs

Environmental science programs with ANS are designed to meet NGSS and Curriculum 2.0 Standards as well as Maryland Green School certification. Programs highlight human impacts, ecological systems, and watersheds through hands-on activities. Programs are for Grades K-8.

Nature-based learning for schools in Maryland & DC.

Woodend Nature Sanctuary Field Trips | Visit Mon - Fri at our 40-acre headquarters, 8940 Jones Mill Road, Chevy Chase, MD.

Naturalist in the Classroom | Save on travel fees and let us come to your classroom!

To learn more visit [anshome.org/teachers](http://anshome.org/teachers) or contact [serenella.linares@anshome.org](mailto:serenella.linares@anshome.org), 301-652-9188 x11.

Rust Nature Sanctuary Field Trips | For programs in Leesburg, VA, contact [susanne.ortmann@anshome.org](mailto:susanne.ortmann@anshome.org).

Programs meet the VA Standards of Learning.



Photo by Serenella Linares

## Professional Development for Teachers

Would you like to enrich your curriculum with hands-on activities for your students? Let us share our education experience with you! Each workshop will provide you with the tools necessary to implement the lessons in your own classroom or schoolyard. Workshops are held year-round. Visit [www.anshome.org/teachers](http://www.anshome.org/teachers) for a schedule and to register online.

### Green Cleaners

**Tuesday, March 10 (6-8 pm)**  
**Price: \$35 per teacher (ANS member), \$40 (nonmember)**  
**Woodend Nature Sanctuary, Chevy Chase, MD**



Have you ever wondered how common cleaning products in our daily lives impact your students' health and the quality of your air and water? This dynamic workshop explores where water comes from, sources

of pollution, and the impact that cleaning products have on our health. Make an effective detergent using only organic materials! Participants will receive the lesson plan, green cleaner bottle, & certificate of completion. Lesson designed to fulfill Maryland Green School requirements.

### Community Science: Bringing Technology into your Classroom

**Saturday, May 2 (10 am to 12 pm)**  
**Price: \$35 per teacher (ANS member), \$40 (nonmember)**  
**Woodend Nature Sanctuary, Chevy Chase, MD**

Transform your students' technological skills into educational tools! Learn to integrate technology into your curriculum by using the iNaturalist and Creek Critter apps. Take your students on a walk and bring out the natural curiosity that makes them scientists through observation of all living creatures. Survey their observations and use their data to discuss the biodiversity, ecosystem health, and environmental benefits of trees at your school. Take home materials to integrate into your lessons.

**Contact us for Professional Trainings at your school. We will bring our expertise to you! Email [serenella.linares@anshome.org](mailto:serenella.linares@anshome.org) or call 301-652-9188 x11.**



# Party With a Purpose

When you celebrate with a birthday party at Woodend Sanctuary, you support us in providing nature education to children all over the DC Metro area. ANS offers nature-themed birthday parties for ages 4-10 at our Woodend Nature Sanctuary in Chevy Chase, MD.

Register online at [anshome.org/parents](http://anshome.org/parents).

- Choose from our party themes: Animal Clues, All About Birds, Reptiles & Amphibians, Wiggly Worms, Insect Investigations, Winter Detective, and Stayin' Alive When Winter Winds Blow.
- Parties are 1.5 hours and are held year-round on Saturdays and Sundays.
- Parties are \$240 for ANS members and \$275 for nonmembers (which includes a family membership).



Photo by Nora Kelly

## Featured Grant Program: GreenKids



Currently in our 15th year of partnership with Montgomery County Public Schools and 11th year with Loudoun County Public Schools, our **GreenKids** program continues to deliver free hands-on environmental science to public schools thanks to generous support from Howard Hughes Medical Institute, Virginia Environmental Endowment, and many individual donors. Each year, thousands of GreenKids students wade into local streams to study aquatic insects and water chemistry. At school, they make recycled paper, practice composting, make environmentally safe desk cleaners, examine skulls and bird beak adaptations, conduct clean-ups of nearby parks to keep our watershed healthy, and grow and eat their own salad greens in school gardens. We are proud to have assisted more than 80 schools in earning state green school certifications by empowering students to take the lead in environmental stewardship.

### Nature Backpacks

Visit our Naturalist Shop to check out a backpack that has tools and activities you and your family can use to explore nature right here at Woodend Sanctuary. Themes include birds, insects, trees, nature art, and more. Backpacks are free for check-out in the Shop but must be returned by 4:30 pm.

# Adult Nature Programs

These programs offer nature novices and experienced naturalists alike an array of opportunities to explore and learn about our area's natural history. All programs are led by experienced naturalists. Lectures are held at Woodend Sanctuary. Field trips are reached by private vehicle or carpool.

*Wild places are closer than you think.* ®

## ONLINE REGISTRATION FOR ADULT PROGRAMS

- Visit [www.ANShome.org/adults](http://www.ANShome.org/adults).
- All changes/cancellations/transfers must be handled through the EE office.
- Want to become an ANS member and get the member rate? Join at the same time you register for a program.
- Questions? Call Pam at 301-652-9188 x16 or email [pam.oves@anshome.org](mailto:pam.oves@anshome.org).

## Walking the Winter Woods and Wetlands: Watkins Regional Park

**Saturday, March 7 (9 am-1 pm)**

**Leader: Stephanie Mason**

**Members \$28; nonmembers \$38**

Winter is often called the *quiet* season, but there is still lots to look at and listen for in the natural world despite the chilly temperatures. Our Senior Naturalist leads this walk to observe winter wildlife and plants, discuss their cold season survival strategies – and search for the earliest signs of spring! Our field trip visits the rich and close-by woodland and wetland habitats alongside the Little Patuxent River near Largo, MD.

## Woodcock Watch

**Saturday, March 7 (5:15-7:15 pm)**

**Leader: Stephanie Mason**

**Members \$25; nonmembers \$35**

In his *Sand County Almanac*, Aldo Leopold described the mating display of the American Woodcock as a “sky dance.” Announcing its presence with nasal “peents”, the male woodcock ascends high in the sky at dusk. To the accompaniment of a constant twittering, it circles, then plummets back to earth in a series of zigzag movements, wings whistling. On this field program to a natural area in upper Montgomery County, we’ll hope to be lucky enough to catch a performance of this seasonal drama.

**Do you want to read your Naturalist Quarterly online and reduce paper use and printing costs? If so, email [membership@anshome.org](mailto:membership@anshome.org) and ask to receive the Naturalist Quarterly by email.**

## Vanishing Vernal Pools

**Sunday, March 8 (4-6:30 pm)**

**Leader: Cliff Fairweather**

**Members \$24; nonmembers \$34**

As hours of daylight lengthen and temperatures begin to rise, animals that have spent the winter in hibernation begin to stir. Among the earliest to be active are certain frogs and salamanders that use vernal or temporary pools for breeding. Unfortunately, the pools – and their breeders – are facing many threats. Our indoor/outdoor program will include an indoor introduction to vernal pool ecology, followed by an outdoor visit to vernal pool habitats in the Rock Creek bottomlands near our Woodend Sanctuary.

## Fridays at Carderock

**Section C: March 13 (10 am-3 pm)**

**Section D: April 17 (9:30 am-3 pm)**

**Section E: May 15 (9:30 am-3 pm)**

**Leader: Stephanie Mason**

**Each walk members \$34; nonmembers \$48**

An elder of a Native American tribe from the Pacific Northwest advised: *There is more to be learned by climbing the same mountain a hundred times than by climbing a hundred different mountains.* Following this admonition, our Senior Naturalist continues our series of broad-based nature explorations along the Potomac River's C&O Canal and its varied habitats, from upland rocky woods to rich floodplain forests. Our “searching for spring” hikes will return each month to a stretch of towpath from the Carderock Recreation Area upriver to Widewater. We'll retrace our steps along the Canal back to Carderock for a total of around 4 miles. We'll celebrate the first signs of spring in March. In April and May, we'll enjoy spring's great burst of new life, both in the plant world and amongst all manner of wildlife, including birds, butterflies, reptiles and amphibians, and mammals.

## Morning on a Monadnock

**Saturday, March 14 (9 am-1 pm)**

**Leader: Stephanie Mason**

**Members \$28; nonmembers \$38**

As winter starts winding down, join our nature hike on Sugarloaf Mountain, our local monadnock. We'll make stops to practice our winter plant ID skills, while keeping our eyes and ears open for activity of still-active wildlife, including birds and mammals, as well as the very early signs of spring. *Our hike will include some uphill and downhill as we cover 2-3 miles, including a fairly steep ¼ mile hike up to the summit (and down). Note: the mountain's trails will be rocky, uneven, and possibly muddy/slippery given the time of year.* The choice of trails and actual distance covered will depend upon the weather/ground conditions of the day.

## Beginning Birding

**Thursday, March 19 (7:30-9:30 pm)**

**Saturday, March 21 (8 am-1 pm)**

**Leader: Mark England**

**Members \$46; nonmembers \$64**

**Lecture only members \$24; nonmembers \$34**

If you're curious about birds and bird watching but don't know where to begin, this class is for you. No experience is required! At our evening lecture, we'll focus on the selection of field guides, binoculars, and other resources, and we'll discuss the basic techniques of bird finding and identification. The goal of our field trip, which visits Black Hill and Little Bennett Regional Parks in upper Montgomery County, is to develop the ability to find, study, and identify birds in their natural environment.

## Urban Watershed Restoration Challenges - the Foundry Branch at Glover Archbold Park

**Saturday, March 21 (9 am-1 pm)**

**Leaders: Neal Fitzpatrick and Bill Yeaman**

**Free, but registration required.**

**FREE**

The Foundry Branch begins near the Tenley Metro Station and flows south into the Potomac River, just west of Georgetown. We will look at the natural features of the stream valley park and discuss long-term stormwater impacts and needed infrastructure rehabilitation, including an old DC Water sewer line. We will walk the watershed from north to south, looking at past problems and imagining the changes needed to restore water quality - a primary objective of the Clean Water Act. Participants can return to Tenley on a Wisconsin Avenue Metrobus and/or make plans for lunch in Georgetown.

## Spring Saunters Along the Canal

**Wednesdays (10 am-12:30 pm)**

**Section A: March 25 - Carderock**

**Section B: April 8 - Widewater**

**Section C: April 22 - Swain's Lock**

**Section D: May 6 - Riley's Lock**

**Section E: May 20 - Violettes Lock**

**Leader: Stephanie Mason**

**Each walk members \$25; nonmembers \$35**

**Entire series \$113/\$158**

**FULL**

Enjoy one or all of these leisurely walks along portions of the C&O Canal. The focus of our walks, each beginning from a different location, will be general natural history of the varied habitats along the Potomac River and the Canal. We'll proceed at a slow "naturalist's shuffle" pace as we watch spring unfold. We'll stop often to observe birds, wildflowers, butterflies, snakes, turtles, and whatever else we might find. Carpool from Woodend with the leader if you desire.

## Warbler Warm-up

**Thursday, March 26 (7-9:30 pm)**

**Leader: Mike Bowen**

**Members \$24; nonmembers \$34**

We think it's never too early to start brushing up on the voices and field marks of the soon-to-be arriving warblers. Even for the most seasoned birders, finding and properly IDing these birds as they arrive or pass through between late March-May can be a real challenge. Since we all need an annual refresher, we've enlisted the help of a veteran ANS field trip leader to use slides and recorded songs to help prepare us for this rich, long-awaited period of birding.

## Early Spring Wildflower Hike

**Friday, March 27 (10 am-2 pm)**

**Leader: Sujata Roy**

**Members \$26; nonmembers \$36**



Beat the winter blues by joining this search for the earliest signs of spring wildflowers in the woods and bottomlands along the Potomac River near Carderock Recreation Area,

just outside the Beltway. We'll look for the greening leaves, swelling buds, and (fingers crossed) unfolding flowers of species such as Harbinger of Spring, Early Saxifrage, Spring Beauty, and Bloodroot. *Our Field Studies Spring flower ID instructor leads this hike over some uneven, rocky and likely muddy natural surface trails on a roughly 2-mile walk.*





## Spring in the Parks

- A. Saturday, March 28 – Catoctin Mountain Park, MD**  
**B. Sunday, April 26 – Calvert Cliffs, MD**  
**C. Saturday, May 16 – Shenandoah National Park, VA**  
**Leader: Stephanie Mason (Full day field trips)**  
**Members \$36; nonmembers \$50; Entire series \$97/\$135**

Join our Senior Naturalist for these broad-based hikes in three of our region's state or federal parks. On each outing, we'll experience the dramatic seasonal changes in the natural world ignited by spring's longer hours of daylight and warming temperatures. Our first field trip visits the front edge of the Blue Ridge Mountains near Frederick, MD, where we'll hike 3-4 miles through rocky woodlands and wetlands. In April, we'll visit southern Maryland to explore coastal plain forests, marshland, and stream valley habitats on a 4-mile round trip hike to the Chesapeake Bay--and back. As the pace of spring change slows down here in the DMV, we'll head to higher elevations to the west and take a hike along the Appalachian Trail. Here spring will still be unfolding. On this moderately-strenuous hike in the northern section of Shenandoah National Park, we'll cover a total of around 4 miles, with fairly significant uphill/downhill hiking along the way. Participants should be in adequate physical condition for moving faster and farther than our usual naturalists' shuffle. *All hikes include some uphill/downhill (steepest on A & C) on natural surface trails. Expect hikes in the mountains (A & C) to cover terrain that will be rocky, uneven, and maybe muddy. Hike B trails may be muddy and/or slippery.*

## Spring Early Birds (7-10 am)

- A. Saturday, March 28 – Kenilworth Aquatic Gardens, DC (Paul Pisano)**  
**B. Saturday, April 11 – Huntley Meadows, VA (Lisa Shannon & Rob Hilton)**  
**C. Sunday, April 19 – Governor's Bridge Natural Area, MD (Mark England)**  
**D. Saturday, May 2 – Riverbend Park, VA (Mike Bowen)**  
**E. Saturday, May 9 – Lois Green Conservation Park, MD (Len Bisson)**  
**F. Sunday, May 17 – Glover Archbold Park, DC (Cathy Stragar)**  
**G. Sunday, May 24 – Rachel Carson Park, MD (Len Bisson)**  
**Each walk members \$26; nonmembers \$36**  
**Entire series \$164/\$227**

Immerse yourself in the phenomenon of spring migration with this series of short bird walks at nearby parks. These walks are designed for beginning and intermediate birders for whom the spring pulse of bird activity can sometimes be overwhelming. On each walk, we'll search for both resident and migrant birds by song and sound. We'll discuss the arrival sequence the spring travelers, practice spotting them in the field, and attempt to learn the songs of many species. *Our trips include walking on natural surface trails and/or boardwalks which may be muddy, uneven, and/or slippery. Trips D, F and G will include some uphill/downhill on narrow and possibly rocky forest trails.*

## Searching for Spring at Governor's Bridge Natural Area

- Sunday, March 29 (2-6:30 pm)**  
**Leader: Stephanie Mason**  
**Members \$28; nonmembers \$38**

Although no excuse is needed, we'll head outside today to welcome the arrival of spring at the Governor's Bridge Natural Area near Bowie, MD. We'll explore up to a couple of miles on a meander through the meadow, woodland, and wetland habitats of this park adjacent to the Patuxent River. If conditions are right, we might spot our first butterfly of the season, our first raspy-voiced Eastern Phoebe, and wet woods aglow with the blooms of Spicebush. We'll stay out until the sun starts setting with the hope of hearing the voices of early-breeding frogs.

## The Magic of Early Spring Woods

- Wednesday, April 1 (10 am-12:30 pm)**  
**Leader: Marney Bruce**  
**Members \$24; nonmembers \$34**

No fooling: even if it's a chilly day our leader is sure to find signs of spring in the woodlands of Blockhouse Point Park (MD) along the Potomac River. With the colors and forms of unfolding leaves and blooms overhead and early spring wildflowers underfoot, the morning is sure to warm the spirits, regardless of the weather. Our leader describes this exploration as moderately difficult, with some uphill/downhill on natural surface trails. *Expect ground conditions that may be rocky and uneven, and possibly muddy/slippery.*

## Introduction to Wildflower ID

- Thursday, April 2 (7:30-9:30 pm)**  
**Saturday, April 4 (9:30 am-3 pm)**  
**Leader: Stephanie Mason**  
**Members \$48; nonmembers \$68**  
**Lecture only members \$25; nonmembers \$35**



Photo by Allie Henry

In April, spring wildflowers in the Washington area are dazzling! We'll spend Thursday evening at Woodend discussing books, equipment, and terminology for beginning wildflower identification. On Saturday we'll travel to the Carderock area along the C&O Canal and explore several short trails between the Canal and the Potomac River. We'll practice using keys to identify wildflowers and look for

Virginia bluebells, dutchman's breeches, twinleaf, toad trillium, and many other species. *Expect some rocky, uneven terrain on the field trip.*

## Bluebells and Budbreak at Boundary Bridge

**Saturday, April 4 (9:30 am-2 pm)**

**Leader: Melanie Choukas-Bradley**

**Members \$28; nonmembers \$38**

We're delighted that the author of the award-winning book, *A Year in Rock Creek Park* and the critically acclaimed, *City of Trees*, will offer her 14th year of nature walks for ANS in the country's oldest urban national park. On our walk, we will witness the annual floral miracle of Virginia bluebells, spring beauties, and trout lilies in the floodplain forest, as we admire the leaves of tulip tree and American beech begin to spill from their buds. We'll hope to catch bloodroot, wild ginger, cut-leafed toothwort and other spring ephemerals in bloom as we explore both floodplain and upland woods at a leisurely pace. Our lunch stop (bring your own lunch), high above the creek on a dramatic rock outcrop offering, will offer spectacular views. Here, we'll do a bit of "forest bathing," time permitting. Throughout, we'll keep our eyes and ears open for belted kingfishers, wood ducks, migrating songbirds, and tiny spring peepers.

## Botanical Gems of Black Hill Regional Park

**Sunday, April 5 (9 am-12:30 pm)**

**Leader: Carole Bergmann**

**Members \$26; nonmembers \$36**

Named one of Montgomery County Park's Best Natural Areas, Black Hill Regional Park near Boyds, MD offers plant enthusiasts a number of special habitats to explore. Our forest ecologist leader will take us on a loop hike (between 2-3 miles) to visit some of them, as winter wanes and the great burst of spring change in the natural world becomes visible. We'll ID plants along the way, focusing on their seasonal aspects and ecological niches.

## Native Plant Gardening

**Tuesday, April 7 (10 am-Noon)**

**Leader: Stephanie Mason**

**Members \$25; nonmembers \$35**

Explore the Blair Native Plant Garden, located just outside the Naturalist Shop, with our Senior Naturalist. Find out more about the values of gardening with native plant species, including lower maintenance; more value to native birds, butterflies and other insects, including pollinators; and more. We'll discuss native alternatives to popular non-native species such as English ivy, as well as resources for broadening one's knowledge of plants native to the mid-Atlantic.

## A Year at Theodore Roosevelt Island

**A: Budbreak and Spring Wildflower Walk, Wednesday, April 8 (10 am-2 pm)**

**B: Summer Kayaking Trip, Wednesday, July 29 (10 am-1:30 pm)**

**C: Autumn Tree Walk, Wednesday, November 4 (10 am-2 pm)**

**D: Late Autumn Tree Walk, Wednesday, December 2 (10 am-2 pm)**

**Leader: Melanie Choukas-Bradley**

**Each walk members \$28; nonmembers \$38**

**Entire series \$101/\$137**

Join Melanie Choukas-Bradley, author of the forthcoming *Finding Solace at Theodore Roosevelt Island* (August 2020), for a year-long exploration of Theodore Roosevelt Island, a 90-acre island in the Potomac that serves as a fitting memorial to our conservationist and naturalist 26th president—and Audubon Naturalist Society member! In the early spring, we'll witness the miracle of budbreak among the island's remarkable trees and see the floodplain forest come alive with Virginia bluebells, spring beauties, trout lilies, and trilliums. During summer, we'll kayak around the island, launching from Key Bridge Boathouse on the Georgetown waterfront. We'll paddle under the island's graceful silver maples and sycamores, get close to the summer wildflowers along the shore, and watch herons, egrets, wood ducks and—hopefully—the noisy kingfisher! As a bonus, we'll be treated to stunning views of the Lincoln Memorial and the "City of Trees" on the horizon. Our fall tree walks will take us deep into the swamp and tidal inlet along the boardwalk where willows, bald-cypresses and cattails frame views of the city behind it. Melanie will share details of the island's fascinating history during this year-long exploration and we'll witness the ebb and flow of the Potomac tides along with the changing seasons. *Fee for trip B does not include canoe or kayak rental.*

## Bluebells in the Bottomland

**Wednesday, April 15 (10 am-2 pm)**

**Leader: Stephanie Mason**

**Members \$28; nonmembers \$38**

Nothing could be finer than a stroll through the bottomlands along the Potomac River this time of year. Spring beauties, golden ragwort and Virginia bluebells add new color to the forest floor, while overhead, trees such as maples, elms, and cottonwood unspool their flowers and leaves. Our route, which is mostly level but could be muddy, will follow the River Trail from Great Falls, MD. We will move upriver along the floodplain and then return along the C&O Canal towpath for a total hike of around 2.5 miles.



| Date   | Time    | Activity   | Fee | Page | Date     | Time     | Activity                                    | Fee | Page |
|--------|---------|--|-----|------|----------|----------|---|-----|------|
| Mar 6  | 9:30 am | Sustainable Solutions to Landscaping Headaches   |     | 9    | April 17 | 9:30 am  | Fridays at Carderock                        | Y   | 16   |
| Mar 7  | 9 am    | Beginner Bird Walk at Woodend                    |     | 31   | "        | 6:30 pm  | Evening on the Canal                        | Y   | 22   |
| "      | "       | Weekend Walk in the Woods                        |     | 13   | Apr 18   | 9 am     | Beginner Bird Walk at Woodend               |     | 31   |
| "      | "       | Walking the Winter Woods and Wetlands            | Y   | 16   | "        | "        | River Herring Return to Rock Creek          |     | 22   |
| "      | 9:30 am | Aquatic Insect ID Review & Quiz                  | Y   | 28   | "        | "        | Hawks Aloft at Fort Smallwood               | Y   | 22   |
| "      | 5:15 pm | Woodcock Watch                                   | Y   | 16   | "        | "        | Potomac River Watershed Cleanup Day         |     | 9    |
| Mar 8  | 4 pm    | Vanishing Vernal Pools                           | Y   | 16   | Apr 19   | 7 am     | Spring Early Birds - Governor's Bridge      | Y   | 18   |
| Mar 10 | 4:30 pm | Riley's Lock and Hughes Hollow Free Birding Trip |     | 29   | "        | 12 pm    | Geology of Holmes Run Gorge                 | Y   | 22   |
| "      | 6:30 pm | Aquatic Insect ID Review & Quiz                  |     | 28   | "        | 2 pm     | The Secret Lives of Spring Wildflowers      | Y   | 22   |
| Mar 11 | 10 am   | Conservation Advocacy 101                        | Y   | 9    | Apr 21   | 8 am     | Pennyfield in the Spring Free Birding Trip  |     | 29   |
| Mar 12 | 4:30 pm | Riley's Lock and Hughes Hollow Free Birding Trip |     | 29   | Apr 22   | 10 am    | Spring Saunter Along the Canal              | Y   | 17   |
| "      | 6:30 pm | Aquatic Insect ID Review & Quiz                  |     | 28   | "        | 4 pm     | Earth Day Along the River                   | Y   | 22   |
| Mar 13 | 10 am   | Fridays at Carderock                             | Y   | 16   | Apr 23   | 7:30 pm  | Butterfly Boot Camp: Azures and Elfins      | Y   | 22   |
| Mar 14 | 8 am    | Patuxent River Park Free Birding Trip            |     | 29   | Apr 25   | 9 am     | Beginner Bird Walk at Woodend               |     | 31   |
| "      | 9 am    | Beginner Bird Walk at Woodend                    |     | 31   | "        | 10 am    | Water Quality Training                      |     | 38   |
| "      | "       | Morning on a Monadnock                           | Y   | 17   | Apr 26   | full day | Spring in the Parks - Calvert Cliffs        | Y   | 18   |
| Mar 19 | 7 pm    | How to Read Your Stream                          | Y   | 28   | "        | 4:30 pm  | Spring in Your Step                         |     | 23   |
| "      | 7:30 pm | Beginning Birding                                | Y   | 17   | Apr 28   | 8:45 am  | School's Out Camp                           | Y   | 13   |
| Mar 21 | 9 am    | Beginner Bird Walk at Woodend                    |     | 31   | Apr 29   | 7:30 am  | Woodbridge/Occoquan Bay Free Birding Trip   |     | 29   |
| "      | "       | Walk and Talk: Where Does the Water Go?          |     | 9    | "        | 1 pm     | Garden Stories                              | Y   | 5    |
| "      | "       | Urban Watershed Restoration Challenges           |     | 17   | May 1    | 8:30 am  | Spring on Wheels Along the Potomac          | Y   | 23   |
| Mar 25 | 7:30 am | Woodbridge/Occoquan Bay Free Birding Trip        |     | 29   | May 2    | 7 am     | Spring Early Birds - Riverbend Park         | Y   | 18   |
| "      | 10 am   | Spring Saunter Along the Canal                   | Y   | 17   | "        | 9 am     | Beginner Bird Walk at Woodend               |     | 31   |
| "      | 7 pm    | Healthy Stream Biology                           | Y   | 28   | "        | "        | Weekend Walk in the Woods                   |     | 13   |
| Mar 26 | 7 pm    | Conservation Cafe                                |     | 9    | "        | 9:30 am  | Botanical Gems: Dickerson Conservation Park | Y   | 23   |
| "      | "       | Warbler Warm-Up                                  | Y   | 17   | May 3    | 7 am     | Spring Warbler Walk                         | Y   | 23   |
| Mar 27 | 10 am   | Early Spring Wildflower Hike                     | Y   | 17   | "        | "        | Blue Mash Nature Trail Free Birding Trip    |     | 29   |



| Date   | Time     | Activity                                   | Fee | Page | Date   | Time     | Activity                                       | Fee | Page |
|--------|----------|--|-----|------|--------|----------|--|-----|------|
| Mar 28 | 7 am     | Spring Early Birds                         | Y   | 23   | May 3  | 1 pm     | Geology of Travilah Barrrens                   | Y   | 23   |
| "      | 9 am     | Beginner Bird Walk at Woodend              |     | 31   | May 5  | 10 am    | It's May-and All is Abloom                     | Y   | 23   |
| "      | 9:30 am  | Field Workshop - Ten Mile Creek            | Y   | 28   | May 6  | 10 am    | Spring Saunter Along the Canal                 | Y   | 17   |
| "      | full day | Spring in the Parks - Catoctin             | Y   | 18   | May 7  | 7 pm     | Conservation Cafe                              | Y   | 9    |
| Mar 29 | 2 pm     | Searching for Spring at Governor's Bridge  | Y   | 18   | May 9  | 7 am     | Spring Early Birds - Lois Green                | Y   | 18   |
| Mar 31 | 10 am    | Tales and Trails begins                    | Y   | 12   | "      | 9 am     | Beginner Bird Walk at Woodend                  |     | 31   |
| Apr 1  | 10 am    | The Magic of Early Spring Woods            | Y   | 18   | May 10 | 7 am     | C&O Canal Free Birding Trip                    |     | 29   |
| Apr 2  | 7:30 pm  | Introduction to Wildflower ID              | Y   | 18   | "      | 9 am     | Appalachian Spring                             | Y   | 24   |
| Apr 3  | 10 am    | Fresh Air Kids at Rust Sanctuary begins    | Y   | 12   | May 13 | 10 am    | Forest Bathing Through the Seasons at Woodend  | Y   | 24   |
| Apr 4  | 9 am     | Weekend Walk in the Woods                  |     | 13   | May 14 | 10 am    | Watershed Community Action 101                 | Y   | 9    |
| "      | "        | Beginner Bird Walk at Woodend              |     | 31   | May 15 | 9:30 am  | Fridays at Carderock                           | Y   | 16   |
| "      | 9:30 am  | Bluebells and Budbreak at Boundary Bridge  | Y   | 19   | May 16 | full day | Spring in the Parks - Shenandoah National Park | Y   | 18   |
| Apr 5  | 9 am     | Botanical Gems of Black Hill Regional Park | Y   | 19   | "      | 9 am     | Beginner Bird Walk at Woodend                  |     | 31   |
| Apr 6  | 8:45 am  | Spring Break Camp begins                   | Y   | 13   | "      | 10 am    | Spring Hike on Sugarloaf                       | Y   | 24   |
| Apr 7  | 10 am    | Native Plant Gardening                     | Y   | 19   | May 17 | 7 am     | Spring Early Birds - Glover Archbold           | Y   | 18   |
| Apr 8  | 10 am    | Budbreak and Spring Wildflower Walk        | Y   | 19   | May 19 | 7:30 pm  | Intro to Bird ID by Voice                      | Y   | 24   |
| "      | "        | Spring Saunter Along the Canal             | Y   | 17   | May 20 | 10 am    | Spring Saunter Along the Canal                 | Y   | 17   |
| "      | "        | Water Quality Training                     |     | 38   | May 23 | 9 am     | Beginner Bird Walk at Woodend                  |     | 31   |
| Apr 11 | 7 am     | Spring Early Birds - Kenilworth            | Y   | 18   | May 24 | 7 am     | Spring Early Birds - Rachel Carson             | Y   | 18   |
| "      | 8 am     | Smallwood State Park Free Birding Trip     |     | 29   | May 27 | 7:30 am  | Woodbridge/Occoquan Bay Free Birding Trip      |     | 29   |
| "      | 9 am     | Beginner Bird Walk at Woodend              |     | 31   | May 30 | 9 am     | Beginner Bird Walk at Woodend                  |     | 31   |
| Apr 13 | 7 pm     | The Living Soil begins                     | Y   | 30   |        |          |  |     |      |
| Apr 14 | 7 pm     | Biology for Naturalists begins             | Y   | 30   |        |          |  |     |      |
| "      | "        | Microbial Ecology begins                   | Y   | 30   |        |          |  |     |      |
| Apr 15 | 10 am    | Bluebells in the Bottomland                | Y   | 19   |        |          |  |     |      |
| "      | 6:30 pm  | Spring Flower Identification begins        | Y   | 31   |        |          |  |     |      |
| "      | 7 pm     | Conservation Cafe                          | Y   | 9    |        |          |  |     |      |
| Apr 16 | 6:30 pm  | Birdathon Kick-Off Event                   |     | 35   |        |          |  |     |      |

- Special Event
- Children and Family Program
- Adult Program
- Natural History Field Studies
- Conservation/Advocacy Event

Y = Fee-based program



## Evening on the Canal

**Friday, April 17 (6:30-8:30 pm)**

**Leader: Stephanie Mason**

**Members \$25; nonmembers \$35**

Early spring evenings can be alive with wildlife as you'll discover on this stroll from Pennyfield Lock up the C&O Canal towpath. We'll watch for wildlife as the sun sets, and as twilight gives way to the darkness of night, we'll listen for calling frogs and hooting Barred Owls while discussing the adaptations of these and other nocturnal animals.

## River Herring Return to Rock Creek

**Saturday, April 18 (9 am-1 pm)**

**Leaders: Neal Fitzpatrick and Bill Yeaman**

**Free, but registration required.**

**FREE**

Tom Horton describes the annual Rock Creek migration of river herring in Bay Country: "No finer parade, or one more unappreciated, ever swung through this capital than the quicksilver legions of *Alosa pseudoharengus*, the common river herring." On our 23rd (!) annual herring walk, we hope to view the spawning run and discuss opportunities for restoring fish migration to Rock Creek. We will visit the fish ladder at Peirce Mill, then walk south on the hiker/biker path to the National Zoo. Meet at the Cleveland Park Metro Station. The walk will end at the Woodley Park/National Zoo/Adams Morgan Station.

## Hawks Aloft at Fort Smallwood

**Saturday, April 18 (9 am-3 pm)**

**Leaders: Hal Wierenga and Lynn Davidson**

**Members \$32; nonmembers \$44**

Fort Smallwood Park, situated at the mouth of the Patapsco River where it empties into the Chesapeake Bay, provides one of the region's premier hawkwatching sites for spring raptor migration. If weather conditions are favorable, we can hope to see good numbers of hawks passing over the park at this season. Though the focus of the day will be watching hawks, there may also be time to look for the earliest songbird migrants, butterflies, and even wildflowers, depending on the day's weather, the number of hawks aloft, and the interest of the group.

## The Secret Lives of Spring Wildflowers

**Sunday, April 19 (2-4:30 pm)**

**Leader: Stephanie Mason**

**Members \$25; nonmembers \$35**

They're lovely to behold. But their beauty belies the scrappy survival strategies of our region's short-lived spring wildflowers. Coping with cold temperatures, species such as Trout Lily and Dutchman's Breeches race to complete their flowering and fruiting cycles before the brief window of spring sunlight gets shut out by the unfolding forest canopy. Our Senior Naturalist will spill some of their secrets in a roughly 1.5-mile round trip walk between Violettes and Riley's Locks along the C&O Canal.

## Geology of Holmes Run Gorge

**Sunday, April 19 (12-4 pm)**

**Leader: Joe Marx**

**Members \$26; nonmembers \$36**

Alexandria sits atop a wedding cake of overlapping and intersecting terraces created by the Potomac River and its ancestral streams. Holmes Run, a relatively large upland watercourse in the northwestern quadrant of the city, has sliced through the layers down to the bedrock on which they all rest. We will walk about 3 miles on good trails and mostly level ground through the Holmes Run Gorge, examining outcrops of granite, schist and partially formed sedimentary rock. The discussion will focus on the ancient origins of the various rock types we see and on changes that have happened within the gorge in historic time. An added bonus will be a miniature magnolia bog! *Note: The pace set and distance covered on our geology hikes will be faster and farther than our usual naturalist's shuffle.*

## Earth Day Along the River

**Wednesday, April 22 (4-7:30 pm)**

**Leader: Stephanie Mason**

**Members \$28; nonmembers \$38**

Leave work early and join this Earth Day exploration of the season's great burst of life in the bottomland woods along the Potomac River just above Great Falls, MD. Our Senior Naturalist leads this search for spring wildflowers, blooming trees, and early spring wildlife activity, including birds, butterflies, and amphibians. *The natural surface river trail is mostly level, but could be muddy. Our round-trip walk is roughly 2.5 miles and very uneven.*

## Butterfly Boot Camp: Azures and Elfins

**Thursday, April 23 (7:30-9:30 pm)**

**Saturday, April 25 (full day field trip)**

**Leader: Rick Borchelt**

**Members \$46; nonmembers \$64**

Around here, if you see an azure in the spring, it must be a Spring Azure, right? And if it's summer, Summer Azure? Probably not! Naturalists have been hard at work uncovering new species right under our noses, and upending what we thought we knew about these quintessential spring butterflies. One thing that has hasn't changed: they represent a real challenge for ID. And you can only see most of them in early spring – all but one has only one generation a year. Join us for an evening discussion of what we know about the half-dozen azure butterfly species we can see here in the mid-Atlantic, plus the related five species of elfin butterflies. A Saturday field trip, most likely to Green Ridge State Forest in central Maryland, will help us hone our ID skills in the field.

## Spring in Your Step

**Sunday, April 26 (4:30-6:30 pm)**

**Leaders: Pam and Chris Oves**

**Free, but registration required.**

**FREE**



The early bird may get the worm, but late afternoon can be a rewarding time to birdwatch as well. Join us on a 2-3 mile stroll on the paved Black Hill Hiker/Biker Trail in Black Hill Regional Park, with views of Lake Seneca.

We'll look and listen for

birds such as Belted Kingfisher and Bald Eagle as well as migrants such as Baltimore and Orchard Orioles. Limited to 12 participants. This walk is aimed at beginning birders.

## Spring on Wheels Along the Potomac

**Friday, May 1 (8:30 am-3 pm)**

**Leader: Stephanie Mason**

**Members \$34; nonmembers \$48**

Spring has sprung and the towpath along the Potomac River is one of the finest places in the DC-metro area to experience the season's richness. In order to cover more territory and visit more habitats, we'll use bikes to explore the stretch from Swain's Lock to Riley's Lock, a 12.3 mile round-trip ride. We'll dismount often to look for spring wildflowers, butterflies and other insects, and reptiles and amphibians, all the while keeping an eye and ear open for spring migrants and other breeding bird activity. Bring your own bike.

## Botanical Gems of Montgomery County: Dickerson Conservation Park

**Saturday, May 2 (9:30 am-1 pm)**

**Leader: Carole Bergmann**

**Members \$26; nonmembers \$36**

Montgomery County's former forest ecologist leads us on an exploration of a new "botanical gem" in this ongoing series. Come prepared to walk from 1.5-2 miles in lush floodplain forest along the Potomac River in Dickerson Conservation Park. While the focus of the hike will be to learn about the range of native trees, shrubs, and spring ephemerals in this rich habitat, the highlight will be the chance to visit some towering, old trees, including the largest known tree in the state of Maryland, a giant sycamore.

## Spring Warbler Walk

**Sunday, May 3 (7-11 am)**

**Leaders: Lisa Shannon and Rob Hilton**

**Members \$26; nonmembers \$36**

More than 30 species of warblers pass through the mid-Atlantic during spring migration—but finding and properly identifying these active songbirds can be a real challenge. Our leaders, both long-time birders in the area, will aim this teaching trip at beginning to mid-level birders. The walk will begin at Pennyfield Lock and then move upriver to Riley's Lock along the Potomac C&O Canal.

## Geology of Travilah Barrens

**Sunday, May 3 (1-4 pm)**

**Leader: Joe Marx**

**Members \$26; nonmembers \$36**

Located in southwestern Montgomery County between Potomac and Darnestown, the Serpentine Barrens Conservation Park preserves a piece of oceanic crust stranded on our continent following a tectonic collision that occurred about 450 million years ago. The park, commonly called Travilah Barrens, encompasses three land units totaling more than 350 acres. The soils are thin, dry and somewhat poisonous, producing interesting outcrops and a distinctive ecology. We will hike a mile or two within the North Unit, the largest and least disturbed part of the preserve. The trails are primitive, with frequent stretches of gravel or mud, often covered in leaves. We will explore the similarities and differences between the serpentine landscape and more normal terrain. *Note that our geology field trips typically move faster and farther than our usual naturalists' shuffle.*

## It's May—and All is Abloom

**Tuesday, May 5 (10 am-1 pm)**

**Leader: Marney Bruce**

**Members \$26; nonmembers \$36**

The display of spring wildflowers and shrubs is remarkably rich in the varied habitats of Rachel Carson Park near Olney, Md. From moist bottomlands along the Hawlings River to rocky, forested uplands, the woods here in May beckon with blooms underfoot and spring-green leaves overhead. *On this several mile walk, expect some uphill/downhill walking over terrain that may be uneven, rocky and/or muddy.*

## Garden Stories

**Wednesday, April 29 (1-4 pm)**

**Native Plant Sale from 12-5 pm**

**Members \$40; nonmembers \$55**

Four accomplished landscape designers will share stories at Woodend about particular gardens they have designed, including their favorite native plants, and lessons learned through success and failure along the way.

**Register at [www.anshome.org/gardenstories](http://www.anshome.org/gardenstories).**





## Appalachian Spring

**Sunday, May 10 (9 am-3 pm)**

**Leader: Stephanie Mason**

**Members \$32; nonmembers \$44**

The G. Richard Thompson Wildlife Management Area in the Blue Ridge Mountains near Linden, VA is a 4000-acre area that is well known for its botanical diversity. The floral display is especially rich in early May when the hillsides are covered with many wildflowers including masses of large-flowered trillium, plus yellow lady's slipper, showy orchis, wild geranium, three-lobed violet, and rue anemone. Spring migrants such as Scarlet Tanager and American Redstart, as well early season butterflies, also abound in these mature woodlands. Our field day will focus on the site's rich plant community, but we won't turn a blind eye to other spring sightings on our leisurely exploration of 2-3 miles. *Expect some uphill/downhill walking on rocky and uneven trails.*

## Wonders at Woodend: Forest Bathing through the Seasons

**Wednesdays (10 am-12:30 pm)**

**Section B: May 13**

**Section C: July 15**

**Section D: October 14**

**Leader: Melanie Choukas-Bradley**

**Each walk members \$26; nonmembers \$36**

Savor the natural joys of each season on forest bathing walks led by Melanie Choukas-Bradley, a longtime ANS field trip leader and the author of *The Joy of Forest Bathing—Reconnect with Wild Places & Rejuvenate Your Life*. Discover the magic of *shinrin-yoku*, translated as "forest bathing," a nature-oriented mindfulness practice that originated in Japan and has become popular all over the world. Our leader is a Nature & Forest Therapy Guide with certification from the Association of Nature & Forest Therapy Guides and Programs of Sonoma County, California. Experience the restoration of Woodend as we explore and commune with the living things in our meadows, forest, and Blair Garden. A serving of maple sap "tea" and a sharing of nature poetry will conclude each walk.

## Spring Hike on Sugarloaf

**Saturday, May 16 (10 am-3 pm)**

**Leader: Tina Thieme Brown**

**Members \$30; nonmembers \$42**

Join the artist of two books about Sugarloaf Mountain for a seasonal outing devoted to the botany, wildlife, geology, and history of our local monadnock in the rural Piedmont northwest of Washington, D.C. The 1.5 mile hike is timed to coincide with high spring's greening of the Sugarloaf Mountain woodlands and the blooming of many plants. Bring binoculars to look for Wood Thrushes, Warblers, Ravens, and other bird species. After lunch, Tina will show you how to approach a quick leaf sketch. *Our hike includes uphill/downhill walking over rocky trails and a fairly steep ¼ mile hike up to the summit—all at a leisurely pace.*

## Introduction to Bird ID by Voice

**Tuesday, May 19 (7:30-9 pm)**

**Thursday, May 21 (7:30-9 pm)**

**Saturday, May 23 (7 am-Noon)**

**Leader: Mark England**

**Members \$49; nonmembers \$68**

The sounds made by birds can help find and identify many species, yet to beginning birders, the wide variety of sounds can be confusing. If you know many of our area birds by sight but not by sound, this class is for you. Two evening sessions will use recordings and slides to study bird songs and calls. Our field trip to one or more sites in Montgomery County will give us a chance to listen for and try to learn some of the local species.

## Geology at Flag Ponds

**Wednesday, June 3 (1-6 pm)**

**Leader: Joe Marx**

**Members \$32; nonmembers \$44**

Maryland's Flag Ponds Nature Park, next to the Chesapeake near the southern end of Calvert Cliffs, contains landscape features more dynamic than most in our region. Two longshore currents converge there, forming a promontory called a cusped foreland. The freshwater ponds and marshes that give their name to the park are bits of the bay cut off by a steady southward migration of the foreland. Even the shape of the cliffs is affected by the sandy promontory, with beach-protected slopes only half as steep as those exposed to direct wave action. *We will walk two or three miles over relatively flat terrain.* The beach is loaded with fossils and collecting is permitted.

## Advanced Odonate Studies: Common Damselflies of the Mid-Atlantic

**Thursday, June 11 (7:30-9:30)**

**Sunday, June 14 (3/4-day field trip)**

**Leaders: Lisa Shannon and Richard Orr**

**Members \$46; nonmembers \$64**

**Lecture only members \$24; nonmembers \$34**

Feel like you're ready to "graduate" from our annual "Introduction to Dragons and Damsels" class? Join us for this advanced workshop focusing on the field ID of the common damselflies of the Mid-Atlantic region. Naturalist Lisa Shannon will deliver our evening's illustrated lecture. She'll be joined on the field trip to the North Tract of the Patuxent Wildlife Refuge by dragonfly expert Richard Orr where the group will work on field ID of these small, brightly-colored dragonfly "cousins."

### Where is Stephanie this summer?

*Senior Naturalist Stephanie Mason will be participating in community science research on butterflies in Colorado all summer. Classes that she normally leads will be led by other talented and engaging ANS Naturalists.*

## Fern Basics

**Saturday, June 13 (9 am-Noon)**

**Leader: Kit Sheffield**

**Members \$26; nonmembers \$36**

Walk the moderate trails of Riverbend Park, home to at least fifteen fern species, with a naturalist who knows this area well. We'll ID what we find, and along the way learn what it is that makes a plant a fern, plus the common characteristics you can use to identify ferns on your own. *Note: there will be some uphill/downhill on this hike of several miles.*

## Summer Shuffles Along the Canal

**Wednesdays (9-11:30 am)**

**Section A: June 17 - Pennyfield Lock**

**Section B: July 1 - Riley's Lock**

**Section C: July 15 - Carderock**

**Section D: July 29 - Swain's Lock**

**Each walk members \$25; nonmembers \$35**

**Entire series \$90/\$126**

Summer's here and it may be hot, so we'll keep our pace to a shuffle as we visit four areas along the Potomac River and the C&O Canal. We'll stop often to observe birds, wildflowers, butterflies, dragonflies, snakes, and whatever else we may find underfoot or overhead. Carpooling will be available from Woodend.

## Botany by Nose

**Friday, June 19 (9:30 am-1 pm)**

**Leader: Carole Bergmann**

**Members \$26; nonmembers \$36**

While most of us rely on visual clues to identify the plants that comprise our landscape, our sense of smell can be an important, complementary tool. Anyone who has broken a Spicebush or Black Birch twig can confirm that. Our outdoor classroom will be Little Bennett Regional Park near Clarksburg, MD, as we "scratch and sniff" our way through woodland and wetland habitats.

## Summer Walks on the Wild Side

**(8-11:30 am)**

**A. Saturday, June 20 - Blue Mash Nature Trail, MD**

**B. Sunday, July 5 - Kenilworth Aquatic Gardens (DC)**

**C. Saturday, August 1 - Huntley Meadows Park (VA)**

**Each Walk: Members \$26; nonmembers \$36**

**Entire Series: Members \$70; nonmembers \$97**

Join a naturalist to explore the summer richness of parks in the DC-Metro area. As summer arrives and brings with it long, hot, muggy days and nights, wetlands and meadows soak up the sunlight and come alive with plant and wildlife activity. We'll explore these open habitats with walks of up to 2-3 miles at a slow summer pace. We'll search for birds, butterflies, dragonflies, reptiles, amphibians, and summer plant life on natural surface paths and boardwalk.

Look for details on other summer programs at [ANShome.org/adults](http://ANShome.org/adults)

## Firefly Fling

FREE

**Thursday, June 25 (8-9:30 pm)**

## Western Montgomery County Butterfly Count

Community Science

**Saturday, June 27**

## Butterflies of Early Summer

**Sunday, June 28 (10 am-2 pm)**

**Members \$26; nonmembers \$36**

## Six-legged Songsters of Summer

FREE

**Wednesday, July 8 (7:30-9:30 pm)**

## Art and Nature Journaling

**Saturday, July 11 (10 am-1:30 pm)**

**Members \$26; nonmembers \$36**

## On the Wings at Lilypons

**Saturday, July 11 (8 am-12 pm)**

**Members \$26; nonmembers \$36**

## Dragons of the Air

**Saturday, July 18 (9-11:30 am)**

**Members \$24; nonmembers \$34**

## Summer Morning in the Hollow

**Sunday, July 26 (10 am-2 pm)**

**Members \$26; nonmembers \$36**

## How Does Her Garden Grow?

**Wednesday, August 5 (10-11:30 am)**

**Members \$24; nonmembers \$34**

## Introduction to Dragonflies and Damselflies

**Thursday, August 6 (7:30-9:30 pm)**

**Sunday, August 9 (3/4 day field trip)**

**Members \$46; nonmembers \$64**

## Summer Fungus Walk

**Saturday, August 8 (9-11 am)**

**Members \$24; nonmembers \$34**





Photo by Jonathan Higman



Typical behavior of a White-Breasted Nuthatch (*Sitta carolinensis*) — heading down an oak tree, head horizontal, a picture of alertness. This species is monogamous and pairs maintain a territory year-round, so their social life is quite stable. Their diet is varied, but they like to take sunflower seeds from feeders and cache them all over their territory. Date: 9/26/2019. Location: Northwest Washington, DC



Would you like to get first-hand experience with edible mushrooms? Mushroom identification can be tricky but you are in luck! Local farmers markets like Takoma or Riverdale farmer markets, as well as organic stores, are safe places to get your healthy mushrooms! This colorful bracket fungus, genus *Laetiporus*, is often called “Chicken of the Woods” because of its reputation for being delicious and having the texture of chicken breast. This specimen is growing on an Appalachian oak. But, again, we encourage you to test out this edible variety and others through farmers markets and grocers.



Photo by Jonathan Higman



Photo by Jonathan Higman

A female Fiery Skipper, *Hylephila phyleus*, on an aster. The “triangle” posture, with the forewings upright and the hindwings flat, is typical of skippers. Caterpillars of this species feed on common grasses and can be a lawn pest. They are rarely seen because they make little shelters at ground level by rolling the grass into a tube. Adult females wander around looking for suitable habitats, while the males stake out grasses waiting for females. Date: 10/9/2019. Location: Woodend

# Stream Science

For over 25 years, ANS has been teaching the natural history of aquatic ecology and training volunteer stream monitors who track the health of our region's streams. Learn from the experts: study stream science in our introductory classes, and you just might be inspired to become a stream monitor yourself! Our advanced classes are perfect for those interested in deepening their knowledge about biological stream monitoring and are taught by our Maryland Biological Stream Survey-certified instructor Cathy Wiss.

## Registration & Fee Information

Registration required: register online at [www.anshome.org/adults](http://www.anshome.org/adults). The classes are open to anyone 10 years (accompanied by an adult) and older. Except for Macro ID Review & Quiz, prices for all classes are \$15 Members/\$25 Nonmembers; waivers are available for existing ANS monitors and middle and high school students earning SSL credit—email [cathy.wiss@anshome.org](mailto:cathy.wiss@anshome.org) for details.

**Interested in ANS' stream monitoring program?** The classes in the introductory series are recommended for all volunteer monitors and those interested in joining the program. To learn more about classes or becoming a volunteer, contact Cathy Wiss at [cathy.wiss@anshome.org](mailto:cathy.wiss@anshome.org).

## Introduction to Stream Science Series



### Classroom Session

#### Healthy Stream Biology

**Section B: Wednesday, March 25 (7-9:30 pm)**

**Section C: Tuesday, June 2 (7-9:30 pm)**

**(Sections B and C cover the same material)**

**Woodend Sanctuary, Chevy Chase, MD**

In the classroom, we will explore how “benthic macroinvertebrates” – organisms that live in the bottom of streams – help us assess a stream's health. We will learn how to identify these organisms to the taxonomic level of order through a PowerPoint presentation and by examining preserved specimens through a hands-on session with microscopes.

### Field Workshop

**Section A: Saturday, March 28 (9:30 am-12 pm)**

**Section B: Saturday, June 6 (9:30 am-12 pm)**

**Ten Mile Creek, Boyds, MD**

In the field workshop, we will visit a healthy stream to practice monitoring techniques and to collect and identify the benthic macroinvertebrates we find.

## How to Read Your Stream



**Thursday, March 19 (7-9:30 pm)**

**Woodend Sanctuary, Chevy Chase, MD**

Learn about the influence of land uses on streams, stream character and dynamics, bank erosion, bar formation, substrate composition, different velocity-depth regimes, and the importance of riffles and riparian vegetation. We will practice assessing stream habitat by using photographs of streams and the forms that monitors fill out in the field. This class is recommended for anyone who plans to participate in the ANS water quality monitoring program and is a good refresher on habitat assessment for experienced monitors.

## Aquatic Insect ID Review & Quiz

**Woodend Sanctuary, Chevy Chase, MD (No fee)**

**Section A: Saturday, March 7 (9:30 am-noon)**

**Section B: Tuesday, March 10 (6:30-9 pm)**

**Section C: Thursday, March 12 (6:30-9 pm)**

**(Sections A, B, and C cover the same material)**



Time to separate the mayflies from the stoneflies! Those who wish to be certified to identify macroinvertebrates in the field in ANS's program demonstrate their ability annually by taking a quiz using preserved specimens. Those who do not take the quiz may still be assigned to a monitoring team to assist with data collection and other field logistics, but only those who have taken and passed the quiz will identify macroinvertebrates for data recording.

## Know Your Invasive Plants

**Woodend Sanctuary (Teale), Chevy Chase, MD**

**Saturday, May 30 (9:30 am-noon)**



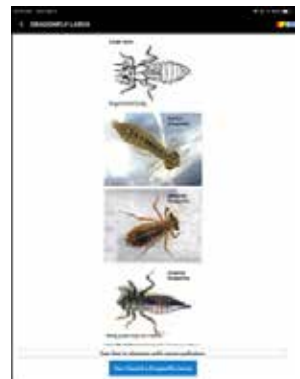
Invasive plants that kill or bring down mature trees can seriously alter stream health and ecosystem function. Volunteer Master Naturalist Diyan Rahaman will help you identify non-native invasive plants at Woodend and in nearby Rock Creek Park. An ANS/Rock Creek Conservancy Partnership.

## ANS's CREEK CRITTERS® app is being updated!

We are very excited about the upcoming release of an updated version of our CREEK CRITTERS app. You'll see:

- many new photos and captions on critter ID screens
- new options for identifying mayflies, dragonflies, damselflies and caddisflies
- changes to how the app reports stream health based on your findings

We expect the new release for the free CREEK CRITTERS app to be available in the Apple App Store and Google Play in the coming weeks. Watch for updates in the ANS eNews and social media channels!



**Want to join the second year of our DC bacteria monitoring project? See page 38 for training dates and info.**

# Free Birding Trips March-June

These free, volunteer-led walks offer birders a chance to explore new areas with other birding enthusiasts. Visit [ANShome.org/adults](http://ANShome.org/adults) for complete directions, additional trips, and more information. Turn to page 16 for the list of fee-based, instructional classes and field trips for beginning to mid-level birders. Register online at [www.anshome.org/adults](http://www.anshome.org/adults).

## MARCH

### Wednesday, March 4, Tuesday, March 10, and Thursday, March 12 Riley's Lock and Hughes Hollow, Montgomery Co., MD Informal late afternoon bird walks until dusk

Joint trip with Montgomery Bird Club. **Meet time/place:** 4:30 pm at the end of Seneca Rd at Riley's Lock "on the bridge." We'll be checking out the river for waterfowl, gulls, terns, etc. Next stop will be Hughes Hollow – part of McKee Beshers. Potential highlights there include early Tree Swallows, calling Pied-billed Grebes and Wood Ducks, and other waterfowl flying into roost. We'll finish with displaying Woodcock if they are in the vicinity. Bring scope and flashlight and wear "muddy conditions" footwear. For more information, call the leader, Jim Green, at 301-742-0036 (no limit—all are welcome!).

### Saturday, March 14 Patuxent River Park, Jug Bay Natural Area, Prince George's Co., MD

Half day. Joint trip with Montgomery Bird Club. Waterfowl, as well as winter and early spring songbirds. Ospreys may be displaying. **Meet time/place:** 8 am at parking lot by park headquarters (16000 Croom Airport Rd.). Wear muddy conditions footgear. For more information, contact the leader, Mark England, at [mengland@canamcontractors.com](mailto:mengland@canamcontractors.com) (18-person limit).

### Wednesday, March 25 Woodbridge/Occoquan Bay NWR, VA

Half day. Songbirds, waterfowl, eagles and other raptors. **Meet time/place:** 7:30 am inside the refuge at central parking lot. For more info, contact leader Jim Waggener at 703-567-3555 (6-person limit).

## APRIL

### Saturday, April 11 Smallwood State Park, Charles County, MD Red-Headed Woodpeckers & Migrants

Half day. Joint trip with Southern Maryland Audubon. Smallwood State Park (2750 Sweden Point Road, Marbury, MD 20658) has become one of the best locations for Red-headed Woodpeckers in the state. We will also look for early migrants, with Louisiana Waterthrush highly likely. **Meet time/place:** 8 am at the Pavilion 1 parking area, past the campground entrance. For more info, contact the leader, Lynne Wheeler, at [somdaudubon@yahoo.com](mailto:somdaudubon@yahoo.com) or text 301-751-8097.

### Tuesday, April 21 Pennyfield in the Spring, Tra-la!

An easy 3-to 4-hour walk, looking for lingering winter visitors and early spring migrants and wildflowers. **Meet time/place:** 8 am at Pennyfield Lock on the C&O Canal. For more info, contact the leader, Lydia Schindler, at [lydia13621@gmail.com](mailto:lydia13621@gmail.com) (preferred) or 202-793-2947 (8-person limit).

### Wednesday, April 29 Woodbridge/Occoquan Bay NWR, VA

See March 25 listing for details.

## MAY

### Sunday, May 3 Blue Mash Nature Trail, Montgomery County, MD

Half day. Both nesting and migrant songbirds, waterbirds, and possible raptors. Possible nesting birds include Yellow-breasted Chat and Yellow Warbler. **Meet time/place:** 7 am at Zion Road parking lot. Waterproof footwear strongly recommended. For more info, contact the leader, Marc Liebermann, at [mdlieberm@gmail.com](mailto:mdlieberm@gmail.com) (10-person limit).

### Sunday, May 10 C&O Canal, MD Areas

Half day. Songbirds, waterbirds, raptors. **Meet time/place:** 7 am in parking lot at Riley's Lock on the Canal. For more info, contact the leader, Tony Futcher, at 301-422-3927 or [tonyfutcher1@verizon.net](mailto:tonyfutcher1@verizon.net) (no limit—all are welcome!).

### Wednesday, May 27 Woodbridge/Occoquan Bay NWR, VA

See March 25 listing for details.

## JUNE

### Saturday, June 6 Little Bennett Regional Park, Montgomery Co., MD

Half day. Nesting songbirds, possibly including Yellow-breasted Chat, Willow Flycatcher, Prairie Warbler, and Kentucky Warbler. **Meet time/place:** 7:30 am at Kingsley Trail parking area. Insect repellent highly advised, as is waterproof footwear. Extra water and sunscreen also recommended. For more info, contact the leader, Paul DeAnna, at 202-544-2680 or [ppdeanna47@gmail.com](mailto:ppdeanna47@gmail.com) (12-person limit).

### Saturday, June 13 Fort C.F. Smith Park, Arlington, VA

One-third day. Nesting songbirds in woods, edge, and meadow habitat. Conditions may be muddy. **Meet time/place:** 7 am in parking lot. For more info, contact the leader, Karen Fairweather, at [twofairs@msn.com](mailto:twofairs@msn.com) or 703-841-1299 (10-person limit).

### Wednesday, June 24 Woodbridge/Occoquan Bay NWR, VA

See March 25 listing for details.

Register online for Free Birding  
Trips at [www.anshome.org/adults](http://www.anshome.org/adults).





# Natural History Field Studies



This popular program, cosponsored by the Audubon Naturalist Society and the Graduate School USA, provides a comprehensive and stimulating view of our region's natural history and conservation issues. Taught at the college freshman level, these courses are open to anyone 18 years of age or older, professionals and amateurs alike. A Certificate of Accomplishment is awarded for completion of a required curriculum of 39 Continuing Education Credits (CEUs). Classes are offered at several locations around the DC metro area, including the Audubon Naturalist Society's Woodend Sanctuary in Chevy Chase, MD, and nature centers and other locations in Virginia, as well as the Capital Gallery in downtown DC, which is Metro accessible. For a complete list of the classes in the NHFS program, plus instructor bios, visit ANShome.org/adults.

## The Living Soil

**NATH1175E, 3 CEUs**

**Class night and time: Mondays, 6:30-8:45 pm**

**Class meetings: March 30-June 1**

**Field Trip Dates: April 18, May 9 and 30 (9 am-1 pm)**

**Location: Woodend Sanctuary, Chevy Chase, MD**

**Tuition: \$365**

**Instructor: Katherine Nelson**

Knowledge of soils is basic to understanding plant communities and ecosystems. Examine the nature of soils and their influence on environment. Learn the structure, properties and the classification of soils and the significance of these factors to plant growth and other uses. Discover life in the soil, and study the soil groups and natural land resource areas of the Central Atlantic region. Previous courses in wetlands and biology are helpful. *If minimum student enrollment is not reached by one week before the scheduled start date, the course may be canceled.*

## Microbial Ecology

**NATH7300E, 1.5 CEU**

**Class night and time: Tuesdays, 7-9 pm**

**Class meetings: April 14-May 12**

**Field trip dates: April 25 and May 2**

**Location: Woodend Sanctuary, Chevy Chase, MD**

**Tuition: \$269**

**Instructor: Lynn Rust**

Study the biological and chemical contributions of microorganisms (bacteria, Archaea, protists, algae) to higher-order systems. Examine the contribution of microbes to microbiomes within higher plant and animal organisms; soil, freshwater, and ocean ecosystems; global nutrient cycling; and human-designed environmental systems. Field trips will explore the role of microbes in composting and ocean sponge microbiomes. *If minimum student enrollment is not reached by one week before the scheduled start date, the course may be canceled.*

## Registration Info for Natural History Field Studies Classes

Experience gained on field trips is essential to these courses, so students should not register for classes when field trips overlap.

Registration may be completed:

- in person at the Grad School Registrar's Office, 8 am-7 pm, Monday-Friday
- online at [graduateschool.edu](http://graduateschool.edu)
- by phone at 202-314-3300 or toll-free at 888-744-GRAD
- by FAX: 866-329-4723
- by mail: Registrar's office, Suite 120, 600 Maryland Ave. SW, Washington, DC 20024

### NATURALIST SHOP OPEN FOR BOOKS!

Our Naturalist Shop will be open 30 minutes prior to the first night of classes at Woodend. Students can buy books and other items at a 20% discount! We usually carry textbooks for classes, but call 301-652-3606 to confirm.



Photo by Serenella Linares

## Support ANS – Monthly!

It's easy! Go to [ANShome.org/Donate](http://ANShome.org/Donate), or contact Loree Trilling at 301-652-9188 x35 or [loree.trilling@anshome.org](mailto:loree.trilling@anshome.org).

**Save the Date**  
**Audubon After Dark: May 28**

# Spring Courses April-June

## Biology for Naturalists

**NATH1110E, 3 CEUs**

**Class night and time: Tuesdays, 7-9 pm**

**Class meetings: April 14-June 16**

**Field trip dates: April 25, May 16 and 30 (inclement weather date June 6)**

**Location: Woodend Sanctuary, Chevy Chase, MD**

**Tuition: \$365**

**Instructor: Paula Wang**

Explore the basic biological principles and processes that govern the natural world. Our evolutionary and ecological lens focuses on mechanisms, patterns, relationships, adaptations, and environmental influences. Topics include the cell and the genetic basis of life; evolution; biological diversity and the tree of life; a comparative survey of the plant and animal kingdoms; and an introduction to ecology. Labs, outdoor activities and field trips provide hands-on opportunities to apply course content. This course is recommended background for other courses in the Natural History Field Studies Certificate program. *If minimum student enrollment is not reached by one week before the scheduled start date, the course may be canceled.*

## Spring Flower Identification

**NATH7135E, 3 CEUs**

**Class night and time: Wednesdays, 6:30-8:30 pm**

**Class meetings: April 15-June 10**

**Field trip dates: April 25, May 9, 23, and 30; students must attend 3 of the 4 trips.**

**Location: Woodend Sanctuary, Chevy Chase, MD**

**Tuition: \$365**

**Instructor: Sujata Roy**



Learn to recognize common spring wildflowers. Increase your enjoyment of the season by learning about flower identification, the relationships of plants, and how they are classified. Gain an appreciation for the rich flora of the Central Atlantic region through study of the principal spring-blooming plant families in the area. Field trips emphasize practice in recognizing diagnostic characteristics and in using identification keys.

The field trips feature some of the area's best wildflower locations. Recommended: a 10x hand lens. *If minimum student enrollment is not reached by one week before the scheduled start date, the course may be canceled.*



Erin Kelleher Photography

## Woodend Sanctuary & Mansion

Climate-controlled tent included  
[woodendsanctuary.org](http://woodendsanctuary.org)



## Free Beginner's Bird Walks Saturdays, 9-10 am at Woodend

Have you ever wanted to learn about the birds you see regularly around Washington? Did you know that about 250 birds either pass through or make this area their home?

Join us Saturday mornings at Woodend for our Beginner Bird Walks. An excellent place to come for those just starting out or for those who want to learn more about our area's birds. From 9-10 am a volunteer leader will guide you through the important how-tos: from how to use binoculars to how to identify our most prevalent resident birds.

Meet at the Audubon Naturalist Shop parking lot. Bring binoculars or use ours. Register at [www.anshome.org/adults](http://www.anshome.org/adults).

These gentle walks happen every Saturday morning from March through June, and September through November. Walks take place only on the first Saturday of December through February. There are no walks in July and August.

Be sure to visit the Audubon Naturalist Shop after the bird walk. The Shop opens at 9 am on Saturdays and if you let the cashier know you attended that morning's bird walk they will provide you with a coupon for a discount in the shop.





ANS's Nature Travel program offers our members and friends opportunities to search for wildlife and explore the wonders of nature at places outside the mid-Atlantic region. Group size is typically limited to 15 people, and many trips fill early. Call Carol Hayes at the ANS travel desk at 301-652-9188 x10 or email [carol.hayes@anshome.org](mailto:carol.hayes@anshome.org) for complete itineraries and registration information or visit [ANSHome.org/travel](http://ANSHome.org/travel).

## Central Arizona and the Grand Canyon

**May 5-14, 2020**  
**Leader: Rob Gibbs**

Beginning in Phoenix, our ultimate destination is the Grand Canyon, but we will take our time getting there as we explore the tremendous diversity of Central Arizona along the way. As we head north out of Phoenix, we will visit one of the northern most areas of the Sonoran Desert supporting a healthy growth of desert species. We will spend several days exploring the diverse habitats of the Verde Valley and Red Rock Country of Sedona. When afternoons begin to heat up we will head for the cool higher elevations of Mingus Mountain or the Mogollon Rim of the Colorado plateau to explore the mixed evergreen forests and their bird life. As we travel north we'll visit the San Francisco Peaks, the highest point in the State. Then it's on to the Grand Canyon to experience the grandeur of what is often considered one of the 7 natural wonders of the world. We'll spend several days exploring its geology and wildlife before returning to Phoenix. Contact Carol Hayes at [carol.hayes@anshome.org](mailto:carol.hayes@anshome.org) if you'd like to receive information on the trip.

## Exploring Mount Rainier National Park

**July 25-August 1, 2020**  
**Leaders: Mark Garland & Gary Mozel**

Explore the rich mountain ecosystems of Mt. Rainier, the highest peak in the Cascade Mountains of the Pacific Northwest. Back in 1899, Mt. Rainier became our country's third National Park, and in addition to the mighty volcanic peak, the park features flower-filled meadows, magnificent old-growth forests, spectacular waterfowl, and rich wildlife communities. Explore it all on this week-long excursion, with a four-night stay at the historic Paradise Lodge, located near tree line on Rainier's southern slope. We'll visit a few other nearby habitats on our way to and from the mountain. Contact Carol at [carol.hayes@anshome.org](mailto:carol.hayes@anshome.org) or 301-652-9188 x10 if you'd like to receive further information.

### For ANS Travels...or Your Own!

Consider travel insurance for any trip with our insurance partner Travelex. By using our code **20-6029** you will also be supporting ANS. Contact Carol at 301-652-9188 x10 for more information, or go to the Travelex website: [travelexinsurance.com](http://travelexinsurance.com).

## Guatemala: Birding and Building Bridges (with Community Cloud Forest Conservation)

**October 3-11, 2020**  
**Leaders: Rob Cahill & David Farner**

Our trip to Guatemala will combine the opportunity to study the bird life of Guatemala while learning about the work of the Community Cloud Forest Conservation organization. We'll take some time to participate in projects designed to protect cloud forest habitat through restoration and helping to improve the lives of local Q'eqchi' Maya people. Although our emphasis will be on birding in Guatemala, our journey will allow plenty of opportunities to discover the natural history of the Central Highlands of Guatemala while learning about Q'eqchi Maya culture. Among the bird species we'll hope to see are resplendent quetzal, blue and white mockingbird, ocellated quail, golden-cheeked warbler, and Guatemalan tyrannulet. Find the itinerary and registration information on our website at [anshome.org/adults/](http://anshome.org/adults/) or contact Carol at [carol.hayes@anshome.org](mailto:carol.hayes@anshome.org) or 301-652-9188 x10.



Photo by Bob Keener

## FUTURE DESTINATIONS

- **Panama** with Terry Lawson Dunn & local guides: 01/2021
- **Costa Rica** with Stephanie Mason & local guides: 02/2021
- **Brazil's Pantanal** with Mark Garland & Xavier Muñoz: Summer 2021
- **Galapagos** with Stephanie Mason and local guides: 6/14-6/23/21

Please email [carol.hayes@anshome.org](mailto:carol.hayes@anshome.org) if you would like to receive information once the trips are confirmed.



# South Texas: Subtropical Habitats and Specialty Birds

November 5-13, 2020

Leaders: Mark England & Paul Pisano

Image by skeeze from Pixabay



Subtropical wildlife from Mexico barely crosses into the US in the Rio Grande Valley of south Texas. Enjoy the great variety of birds, butterflies and other wildlife with a week-

long exploration of this dynamic ecosystem. Plain Chachalaca, Great Kiskadee, Ringed Kingfisher, Altamira Oriole and Green Jay are just a few of the species rarely, if ever, found elsewhere in the US. We will take day trips to habitats ranging from the Chihuahuan desert scrub of Falcon State Park to the expansive coastal flats of Laguna Atascosa National Wildlife Refuge and nearby South Padre Island. Other great birding sites we will be sure to visit include Bentsen-Rio Grande Valley State Park, Santa Ana National Wildlife Refuge, and Estero Llano Grande State Park, among others. Contact Carol at carol.hayes@anshome.org or 301-652-9188 x10 if you'd like to receive further information.

# Volunteer Corner

An occasional feature that highlights the many and varied opportunities and volunteers of ANS

by Mitch Greene, Volunteer Coordinator

This quarter I would like to introduce you to Angela Cauli Smedley who started volunteering with us about a year ago. In the past year she has donated more than 90 hours of her time in service to ANS. She spends her time here as a Forest Steward and Garden Steward, two of the volunteer opportunities available in the Restoration Department at ANS.



Angela grew up in Milan, Italy and worked as an elementary school teacher. Life brought her to the U.S., where she eventually retired from the Italian Embassy and “decided that if I were to work again, it would be an outside job, close to nature.” She discovered ANS while attending, “a very cold” and “magical” snow-

covered January wedding at Woodend, where she was “surprised that such a...paradise was so close to my home.”

One of her favorite memories volunteering here is planting American chestnut seedlings which reminded her “of pick[ing] up chestnuts in Lombardy’s woods every fall” as a child. While it was sad for Angela to learn of the blight that caused so much damage, she was cheered by the prospect of helping to bring back such a magnificent species. Her commitment to our trees was demonstrated over the very dry summer when Jenny Brown, our Garden Steward Staff Liaison, noted that, “she was willing to water on her own—carrying buckets to distant trees not reachable by the hose.”

What keeps Angela coming back to Woodend—beyond chestnuts and magical weddings—is something you should read in her words:

“For the first time in my life, I wanted to work as a gardener, in the woods. I was concerned that my age could be a negative factor. But, to my surprise, I found out that ANS...[is] genuinely happy to work with people of different genders, ages, and cultural backgrounds. I immediately felt accepted. Working as a volunteer at ANS has been a very positive educational experience.”

Thank you, Angela, for all that you do for ANS and our restoration teams!

If you are interested in helping the restoration department, please visit our website, [www.anshome.org/restoration](http://www.anshome.org/restoration), or email me directly at [mitch.greene@anshome.org](mailto:mitch.greene@anshome.org).



Innovative  
Landscapes  
for  
Outdoor Living

MARK WILLCHER & CO., INC.  
landscape designers/contractors

*Building sustainable gardens for birds,  
wildlife and people since 1980.*

**www.MarkWillcherCo.com**  
301-320-2040  
Mark@MarkWillcherCo.com

WASHINGTONIAN AWARD WINNER



## For Nancy Pielemeier, the new perch at the top of ANS feels natural

by Caroline Brewer



Nancy Pielemeier's new perch as president of the Board of Directors of the Audubon Naturalist Society feels, well, natural. "It was pre-ordained somehow," says the D.C. resident, who happily admits that she was rocked in the cradle of the great outdoors from birth. "I was privileged to grow up in a semi-rural area of Illinois, in the center of an agricultural community, and spend time on my grandparents' farms," Pielemeier says. "I was exposed to outdoor opportunities throughout my childhood, and that contributed to my lifelong interest in nature."

Pielemeier's passion for nature keeps her tooling around in her D.C. home garden, challenging herself with new varieties of plants, adding more and more native species. It keeps pushing her to walk new trails in search of the sights and sounds of the more than 200 species of birds that populate our region. She loves to bring her granddaughter along. "I'm far from an expert birder, but the places you find wonderful birds are wonderful places in nature. Going out with other people provides an opportunity to have a broader experience in nature," she shares.

Pielemeier grows her knowledge by taking ANS adult nature education classes year 'round, including recent courses in winter tree ID, Natural History Field Studies birding, Conservation Café lectures, and a first-time ANS nature travel trip to Tanzania.

After 22 years as an ANS member, Pielemeier is an ambassador for ANS fundraising and special events. Pielemeier is excited to lead ANS into a new decade where restoration and demonstration projects at Woodend Nature Sanctuary will transform wildlife habitats and the visitor experience for people. "We're embarking on the implementation of Nature for All and it's going to increase visitor participation in nature education. The wheelchair accessible trail will open opportunities for people who haven't been able to enjoy nature in our region."

Pielemeier sees how Nature for All's new trails, restored stream and pond, nature play space, and classroom upgrades will complement our outreach to new communities. "It's important for the organization to reflect the demographics of the region we have

a mission to serve--one that's diverse and dynamic," she said. "We want to be able to reach out to people throughout the region to attract new partners to help spread the word about nature preservation and conservation."

She's especially excited about helping ANS take an even stronger lead on combatting climate change. "ANS started as an advocacy organization and climate change is an incredibly important advocacy focus that's completely compatible with our overall mission and vision." She is proud of increased funding that has added dedicated advocacy staff in DC, Maryland, and Virginia to push climate change mitigation and resilience initiatives.

Add to that anticipated new staff to support Adult Education programs, and Pielemeier feels some of ANS's best years are ahead. "I think things are on the right path," she said. "We have great staff, wonderful volunteers and donors, and an ambitious vision. I look forward to continuing the upward trajectory so that ANS can increase our impact and thrive well into the future."



Get your garden ready!

AUDUBON NATURALIST SHOP  
@ WOODEND SANCTUARY  
M-F 10 AM-5 PM  
SAT 9 AM-5 PM  
SUN 12 PM-5 PM

### Meet Your Garden Needs at the ANS Shop!

Once you hear our Garden Stories speakers (page 5), we know you'll be inspired to get gardening right away! The Audubon Naturalist Shop has more resources to help you do just that!

- During the event on April 29th, Izel Native Plants will offer an assortment of plants for sale that solve your garden challenges, from groundcovers for dry shade to late bloomers that support fall pollinators.
- New this spring! We are now selling packets of native plant seeds. In stock now are species that will germinate easily in spring to support local pollinators. Start them in pots or direct seed outdoors.
- We have a wide variety of gardening books ranging from practical manuals to stunning coffee table books. Be sure to look for the expanded and updated edition of Piet Oudolf's *Planting the Natural Garden*.
- You'll find other gardening essentials like the best garden gloves, hats, poison ivy soap, and more!

## It's the big "Four-Oh"

AUDUBON NATURALIST SOCIETY'S

# Bloomin' Birdathon

## 40th Annual ANS Bloomin' Birdathon April 15–May 31

Novice or expert – anyone can participate in this special 40th anniversary of our Bloomin' Birdathon.

With special guided Birdathon Bird Walks, an exciting Kick-Off event, an eBird class, and special recognition for new participants, we are calling on all ANS members and supporters to join this important fundraiser that supports ANS's education and conservation programs.

### How it works

Individuals or teams count as many species of birds as they can in a 24-hour period during migration season (April 15–May 31, 2020) and get sponsors to pledge a set amount of money per species seen or a flat amount for their efforts. You can count:

- Out in the field
- In your backyard – for tips check out Cornell's Feeder Watch program at <https://feederwatch.org/about/detailed-instructions>
- With your family at a favorite walking/picnic spot
- In teams of friends or colleagues

However you choose to do it, the Birdathon is a fun and rewarding way to get outdoors this spring and support ANS at the same time.



**Rather count Blooms?** No problem! Just ask your sponsors to pledge for the number of species of wildflowers you see in a given 24-hour period between April 15 and May 31. Or count both birds and blooms. The main thing is to get out and enjoy the spring while benefitting ANS.

For questions or more information, contact Loree Trilling at 301-652-9188 x35 or [loree.trilling@anshome.org](mailto:loree.trilling@anshome.org).

## Birdathon Kick-Off Event

Thursday, April 16, 6:30–8:00 pm at Woodend

Join us for a special evening to launch the 40th Annual Bloomin' Birdathon:

- Formal introduction to the Birdathon
- Special education stations
- Discounts on field guides and other birding gear
- Sample solicitation emails and letters
- Guided bird walk at Woodend

Register here: [www.anshome.org/Birdathon](http://www.anshome.org/Birdathon)



### Novice birder or shy of asking for sponsors?

If you are new to birdwatching, join one of our **Guided Birdathon Bird Walks** at locations around the region. You will feel confident of your sightings for your sponsors and improve your birding skills, too.

**Novice Birders:** We strongly encourage participants to seek sponsors for their sightings and will provide sponsorship language and sample letters and emails.

**Shy of asking but want to participate:** If you would rather make a donation to participate in a **Guided Birdathon Bird Walk**, register with your donation on the ANS website at [anshome.org/Birdathon](http://anshome.org/Birdathon).

## We won for Virginia's terns!

Residents spoke up, and Governor Northam listened. Please visit our blog at [anshome.org/conservation](http://anshome.org/conservation) to send Governor Northam a "thank you"! He has taken steps to protect not only the migratory, colony-nesting birds on South Island at the Hampton Roads Bridge-Tunnel, but all migratory birds in the Commonwealth! With federal officials weakening the 100-year-old Migratory Bird Treaty Act in 2018, these birds were left vulnerable to critical habitat loss. See page 8 for more.



[twitter.com/ANStweets](https://twitter.com/ANStweets)



# Restoration

## Gardens at Woodend

Ten years ago, Jane Blair and her daughter Liz Jones started the first native plant garden at Woodend in memory of William Blair, who had been an ANS Board President. Given the large population of deer at Woodend at the time, the Blair Native Plant Garden had to be protected with cumbersome fencing. Because of deer, ANS could not easily expand gardens. But with the installation of a deer fence around the bulk of the sanctuary in 2017, we have completed several new native landscaping projects and have plans to continue expanding. We created rain gardens and conservation landscaping that slow and infiltrate stormwater while providing food and shelter to wildlife. At the mansion, we recently installed an accessible flagstone walkway. While we were at it, we removed exotic plants like crepe myrtle and Chinese holly from the mansion landscape, replacing them with natives like coneflower, beautyberry, and spicebush. Of course, we also rejoiced in removing the deer fence "cage" around the Blair Garden! We hope you'll visit the gardens of Woodend often as we continue to add beauty and function with native plants.



Photo by Ben Israel



Photo by Alison Pearce



Photo by Ben Israel

**MEMORIAL AND TRIBUTE CONTRIBUTIONS**

November 2019-January 2020

**IN HONOR OF:****Lisa Alexander**

Michael &amp; Leslie Weber

**Karoline, Anna & Roger Anders**

Dorothy &amp; Stephen Carpenter

**Katherine Benjamin**

Katrina Anderson

**Debbie Blumenthal Taylor**

Pamela Levine

**Richard & Susan Calderone**

Bradie Allman

**Edwin Clark**

Anne Litchfield

**Katherine Coon**

Charlotte Colvin

**Gayle Countryman-Mills**

Andrew Mills

**Marie & David Evans**

Lauren &amp; Justin Richeson

**The Flanagan Family**

Holly Pollinger

**Madeleine Gefke**

Gardell Gefke

**Ann-Mari Gemmill**

Elan Nguyen

**David Goldman**

Ariel, Jacky, Lily, Ally &amp; Ben Goldman

**Rebecca Henson**

Mark Schlesinger

**Jan Holderness**

Sarah Demarest

**The Howard Family**

Holly Pollinger

**Louise Lees**

Alison &amp; David Waxman

**Denny May**

Betsy Taylor

**Cecily Nabors**

Pro Wealth Management

**Abel Olivo**

Kendra Brown

**Heidi Moyer & Tyler Ormsby**

Benjamin Heller

**Nancy Pielemeier**

Elizabeth Scott

**Sudi Press and Caroline Peirce**

Emilie &amp; Jon McBride

**Alex, Julia, Jack & Henry Pollinger**

Holly Pollinger

**Anne Sturm**

Kristie Miller

**Mary Travaglini**

Bethesda Community Garden Club

**Joe Wagner**

Lauren Becker

**Sarah, Taylor & Aaron Wockley**

Holly Pollinger

**IN MEMORY OF:****Jan Brown**

Kate, Wes, Amery, &amp; Quinn Pielemeier

**Robert Brown**

Sandra &amp; Melvyn Kornspan

**Ellen Dashner**

Rita Svec

**Lura May Dillow**

Kate, Wes, Amery, &amp; Quinn Pielemeier

**Elvira Gaitan**

Yolanda Alcorta

**Susan Gilbert**

Betty Brody

**James Grodsky**

Susan Grodsky

**Pearl Marks**

Robert Mecklenburg

**Dorothy R. Mead**

Elaine Suriano

**Irving Meade**

Kate Meade

**Connie Nissley**

Loretta, Ken &amp; Kaili Ebert; Anne Fretz; Brigid Kelly; Kim Kopetz; Darlene &amp; Kerry Krenzke; Duane &amp; Sara Malm; Ralph &amp; Helen Petersberger; Ellie &amp; Fred Silverstein; Elly &amp; Dick Warren; Charlotte Wunderlich

**Sue Prindle**

Mr. &amp; Mrs. Stanley Dulski; Ann &amp; Tim Prindle; Pamela Sotir &amp; David Deroian

**Marion O. Robertson**

Donald B. Robertson

**Glenda Shasho-Jones**

Allen Abbott; Stephen Cobden; Zoe Davis; Donna King; Joyce Kole; Marketsmith, Inc.; Stephen Marks; George Mollo; Lisa Moore; Neil OKeefe; Jamie Rosen; Barbara Schubert; Jules Silbert; Ray Slyper; Martin M. Solomon; Roslyn Tanzman

**Margaret Sickels**

Maralyn Kaufman

**Michael Trister**

Nancy Duff Campbell

**LEGACY SOCIETY**

Let your passion inspire the future. Join ANS's Legacy Society by including ANS in your estate plans.

By naming the Audubon Naturalist Society of the Central Atlantic States, Inc. as a beneficiary of your estate, you are making an important statement about

the quality of life you want for yourself — and for future generations.

Through a bequest to ANS you are helping to ensure that future generations will have access to vibrant green spaces, clean water, natural native habitats and superior environmental education. Your legacy will be one that inspires countless individuals to love and protect nature just as you did.

For more information contact Jacky Wershale at [jacky.wershale@anshome.org](mailto:jacky.wershale@anshome.org) or 301-652-9188 x31.



# WATER QUALITY **CITIZEN SCIENCE**

Learn about water quality and gain hands-on experience collecting data and water samples throughout the District. Anyone 18 years and older, or kids with a chaperone can help!

Volunteers must attend one training session to be certified as a DOEE Water Quality Citizen Scientist.

## 2020 TRAINING DATES

**Wednesday, April 8, 10am - 1 pm**

National Museum of Natural History  
10th & Constitution Ave NW

**Saturday, April 25, 10 am - 1pm**

DC Water HQ in Navy Yard  
1385 Canal Street SE

### Want more info?

Visit [doee.dc.gov/citizen-science-initiatives](http://doee.dc.gov/citizen-science-initiatives)  
or email [monitor@anacostiariverkeeper.com](mailto:monitor@anacostiariverkeeper.com)

Implemented by:

Anacostia  
RIVERKEEPER®

DEPARTMENT  
OF ENERGY &  
ENVIRONMENT

GOVERNMENT OF THE  
DISTRICT OF COLUMBIA  
DC MURIEL BOWSER, MAYOR

The District of Columbia Department of Energy and Environment (DOEE) awarded a grant to Anacostia Riverkeeper to implement a volunteer-based water quality monitoring program with the goal of providing up-to-date, weekly water quality data to residents and visitors. ANS is working with Rock Creek Conservancy to train and deploy volunteers in the Rock Creek watershed. For more information, visit <http://doee.dc.gov/service/citizen-science-initiatives> or contact [cleanstreams@anshome.org](mailto:cleanstreams@anshome.org) and [monitor@anacostiariverkeeper.org](mailto:monitor@anacostiariverkeeper.org).

## Share your message about your business or organization with a prime audience!

# Naturalist Quarterly



reaches individuals and families who are passionate about our community and want to learn about businesses and organizations that support nature and our local environment.

Distributed in public spaces throughout the D.C. region and mailed directly to homes in ZIP codes that advertisers find most attractive, Naturalist Quarterly is an excellent way to promote your business.

To advertise, call Caroline Brewer at  
(301) 652-9188 ext. 23



## REGISTRATION INFORMATION

Education programs are held at Woodend, the Audubon Naturalist Society's 40-acre Headquarters, 8940 Jones Mill Road, Chevy Chase, MD 20815, unless otherwise noted. All education programs except Nature Travel have online registration. You may also register in person in the EE office Monday-Friday, 9 a.m.-4 p.m. You will be notified immediately if the program is full; otherwise, confirmation letters will be emailed 1-2 weeks before the scheduled program.

Lectures are held at our Woodend Sanctuary, and field trip transportation is by private vehicle or carpool unless otherwise noted. Most programs are limited to 16 participants and also have a minimum enrollment, so early registration is important to ensure that programs run. Unless otherwise noted, weekend adult foray program fees do not include meals or lodging.

Because our programs rely on registration fees for funding, we have adopted this policy:

- Cancellations must be made at least six working days before the beginning of the program to be eligible for a credit to your account, less a \$5 administrative fee.
- If an adult foray is cancelled by ANS due to low enrollment, you will receive a full refund. If a weather-related concern or another issue outside of ANS's control forces a cancellation, you will receive a full credit to your account.
- Nature travel programs have different cancellation policies, explained on the information sheet sent on request.

ANS is committed to addressing problems when they occur. Program participants are encouraged to bring problems or concerns of any kind directly to the staff member in charge of the program. Staff members will try to resolve the problem immediately or as soon as reasonably possible. If staff is unable to do so, they are expected to bring the problem to the attention of their immediate supervisor or member of the Senior Management Team, who will take responsibility for seeking a resolution. Program participants are welcome to bring unresolved problems or concerns to the attention of the Executive Director. The Executive Director's decision on resolution of the problem is final.



Get your garden ready!

AUDUBON NATURALIST SHOP  
@ WOODEND SANCTUARY

M-F 10 AM-5 PM

SAT 9 AM-5 PM

SUN 12 PM-5 PM



@ANSNature



8940 Jones Mill Road  
Chevy Chase, MD 20815

Non-profit org.  
AUTO  
U.S. postage  
PAID  
Suburban, MD  
Permit No. 3385

## Master Naturalist Training at Woodend Sanctuary!

This fall, ANS will partner with the University of Maryland Extension to offer our tenth Maryland Master Naturalist training course. ANS will bring top-notch instructors to the program, which will provide:

- 52 hours of training in the ecology, flora, and fauna of MD
- 8 hours of hands-on field work
- Focus on the natural history of Maryland's Piedmont region

Master Naturalist training graduates will commit 40 hours annually to naturalist-related volunteer service with ANS assisting with education programs, sanctuary stewardship, or community outreach.

**DATES:** Mondays & Wednesdays, September 9–November 2, 2020  
(9:30 am–3 pm)

Application-based admission limited to 20 participants.

If you'd like to learn more about the natural world and become a trained naturalist volunteer, apply online starting May 15 at [ANSHome.org/master-naturalist](https://anshome.org/master-naturalist). Questions? Email [mitch.greene@anshome.org](mailto:mitch.greene@anshome.org).

Proudly printed on 30% post-consumer waste paper. Please recycle this paper.



# Audubon After Dark

May 28, 2020

## SAVE THE DATE