



43<sup>rd</sup>

# Bloomin' Birdathon

## Top Ten Birds!



**AMERICAN ROBIN**

Says:

Cheerily, Cheer-up, Cheer-up!



**TUFTED TITMOUSE**

Says:

Peter, Peter, Peter!



**BLUE JAY**

Says:

Jay! Jay! Jay!



**CAROLINA CHICKADEE**

Says:

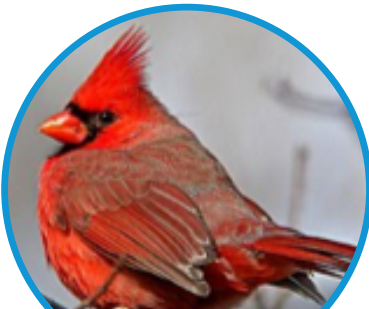
Chickadee-dee-dee!



**CROW**

Says:

Caw! Caw! Caw!



**NORTHERN CARDINAL**

Says:

Birdie, Birdie, Birdie!



**CAROLINA WREN**

Says:

Tea-kettle, Tea-kettle, Tea-kettle!



**DOWNY WOODPECKER**

Says:

Squeak! Squeak!



**RED-BELLIED WOODPECKER**

Says:

Pik! Pik-pik-pik-pik!



**MOURNING DOVE**

Says:

Coo-oo, Coo-oo, Coo-oo!

*Keep track of the birds  
you see or hear with tally marks!*

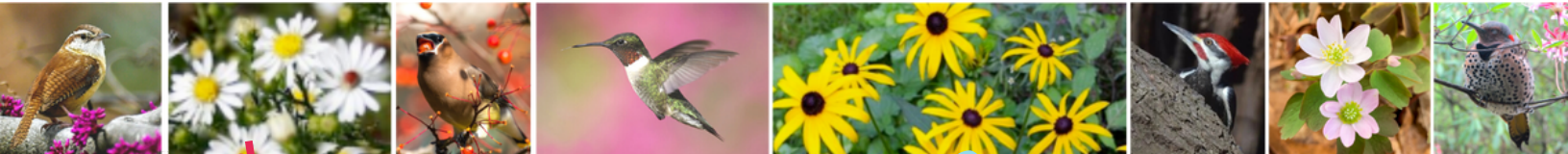


**nature forward**

Connecting people and nature in the Capital Region

[natureforward.org/birdathon](http://natureforward.org/birdathon)





43<sup>rd</sup>

# Bloomin' Birdathon

## Top Ten Wildflowers!



### SPRING BEAUTIES

Among the longest blooming spring wildflowers.



### MAY APPLES

Umbrella-like leaves and one big flower.



### TROUT LILY

Named for its leaves which are speckled like trout.



### VIRGINIA BLUEBELLS

Bell-shaped, sky-blue flowers.



### CUTLEAF TOOTHWORT

Leaves have deeply cut lobes that resemble teeth.



### SMOOTH SOLOMON'S SEAL

Has dangling white flowers.



### COMMON BLUE VIOLET

Heart-shaped leaves. Common in yards and woodlands.



### WILD BLUE PHLOX

Bright blue-pink flowers in a woodland setting.



### DUTCHMAN'S BREECHES

Blooms resemble a pair of upside down pants.



### SMOOTH SOLOMON'S SEAL

Has dangling white flowers.



### COMMON BLUE VIOLET

Heart-shaped leaves. Common in yards and woodlands.



### PINK LADY'S SLIPPER

Two-to-three inch showy long flowers.

*Keep track of the wildflowers you see with tally marks!*



**nature forward**

Connecting people and nature in the Capital Region

[natureforward.org/birdathon](http://natureforward.org/birdathon)





43<sup>rd</sup>

# Bloomin' Birdathon

## Top Ten Butterflies!



**EASTERN TIGER SWALLOWTAIL**

One of the most common eastern butterflies.



**ZEBRA SWALLOWTAIL**

Its markings resemble zebra stripes.



**SPICEBUSH SWALLOWTAIL**

Brilliant blue or greenish coloring on hindwings.



**CABBAGE WHITE**

Has one or two small black dots on wings.



**CLOUDED SULPHUR**

Medium sized and abundant with dark spots.



**EASTERN TAILED-BLUE**

Small, flies low to the ground.



**RED SPOTTED PURPLE**

A woodland butterfly.



**PAINTED LADY**

Flies fast and likes thistle plants.



**PEARL CRESCENT**

Small butterfly. Common along sunny road edges.



**MONARCH**

Beautiful "King" of butterflies.

*Keep track of the butterflies you see with tally marks!*



**nature forward**

Connecting people and nature in the Capital Region

[natureforward.org/birdathon](http://natureforward.org/birdathon)





43<sup>rd</sup>

# Bloomin' Birdathon

## Top Ten Trees!



### AMERICAN BEECH

Smooth,  
grey trunk.



### NORTHERN RED OAK

One of our  
most common oaks.



### BLACK LOCUST

Pendulous, white  
fragrant blooms.



### TULIP TREE

Beautiful blooms that  
look like tulips.



### EASTERN REDBUD

Pink flowers and  
heart-shaped leaves.



### FLOWERING DOGWOOD

Pink or white blooms.



### RED MAPLE

Common tree with  
"helicopter" seeds.



### AMERICAN HOLLY

Prickly leaves with  
classic red berries.



### AMERICAN SYCAMORE

Likes to be near water.  
Camouflage-like bark.



### WILLOW OAK

Common street tree with  
narrow leaves.

*Keep track of the trees  
you see with tally marks!*



**nature forward**

Connecting people and nature in the Capital Region

[natureforward.org/birdathon](http://natureforward.org/birdathon)