

Exploring Green Careers

Part Two:

Your Turn to Interview

Gaby Elliott



nature
forward
natureforward.org

To get the most from an interview, it helps to learn a little bit about your subject beforehand.

During a livestream event you will meet:

Gaby Elliott

And learn about her role as an

Urban Forester

with



Gaby Elliott

Learn more about Gaby!

Hello! I am Gaby Elliott, and I'm an Urban Forester with the local nonprofit, Casey Trees. Our mission at Casey trees is to restore, enhance, and protect the urban tree canopy of our nation's capital. As an Urban Forester, it's my job to plan, coordinate, and design tree plantings in and around DC. I find planting opportunities, coordinate with property owners, choose species, and oversee tree plantings and maintenance.

Growing up I liked science and biology, and especially environmental sciences. I received my BS in Ecology from the University of Pittsburgh, and my MS in Forest Conservation from the University of Florida. Over the last 10 years, I've worked and volunteered for many green industry companies and nonprofits across Pennsylvania, Maryland, DC, and New Jersey.

I've always had a soft spot for trees, and the more I learned about them, the more fascinating they became to me. There's always more to learn about my field, so I continue to fall in love with trees every day!



What does Equality Mean to You?



To me, equality in my field means the opportunity to contribute to a cause I believe in and never be withheld from doing so based on my sex or gender. The goals we have at Casey Trees are big ones; they require all hands on deck!

Equality means everyone can contribute their strengths to the cause.



What's an Urban Forest?

An urban forest is the entire collection of trees, shrubs, other plants, and animals within the boundaries of an urban landscape. This includes:

- Wooded forests
- City Parks
- Street Trees
- Lawns and Gardens
- Private and Public Lands
- Individual forested units within or near the urban boundary



What are some benefits of urban forests?
Think about benefits locally, as well as globally.



Challenges for Urban Forests

Urban environments create challenging conditions for forests to thrive. Trees need to withstand:

- Limited Resource Availability
- Invasive Species
- Fragmentation
- Edge Effects
- Land Use
- Frequent Disturbance from flooding, soil compaction, erosion, and fragmentation



What are some actions we could take within our neighborhoods to support urban forests?



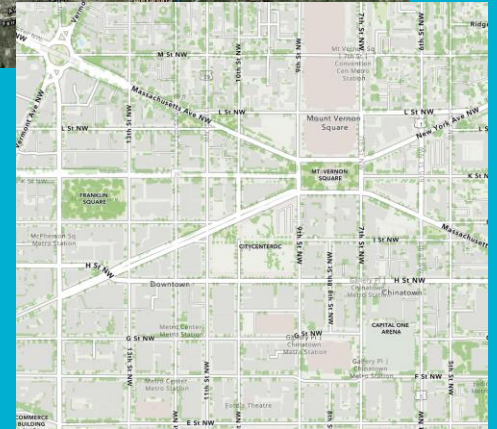
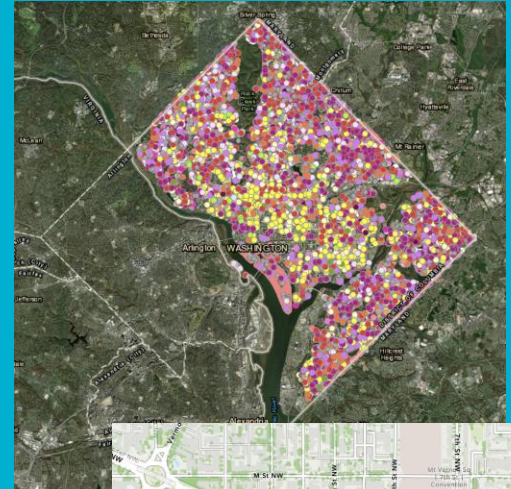
Explore DC's Tree Maps

Explore DC's trees visually! Use this resource to explore maps that show different ways of looking at DC's urban forests. Maps show where Casey Trees has planted, identified, or measured trees through various programs.

DC Tree Maps



Now that you've explored DC's trees virtually, get to know the trees in your neighborhood. How would you map them to tell the story of their role in your community?



Learn More about Casey Trees!

Want to find out how you can get involved with the important work Casey Trees is doing to take care of urban forests in DC? Check out their volunteer opportunities or learn more about their *Plant it Forward* program to start planting more trees in YOUR community!



PLANT IT FORWARD



VOLUNTEER



DONATE



TAKE ADVOCACY 101



READ THE LEAFLET



DOWNLOAD THE
ADVOCACY HANDBOOK

What Do You Wonder?

What questions do you still have about urban forests?

What questions do you have about taking care of urban forests?

What questions do you have about Gaby's career experience?

What questions do you have about the work of Casey Trees?

Now that you are familiar with **Gaby** and her career, write down some questions to ask during the livestream event!

